

Planning Application 13/2102/FUL

DENMEAD SCHOOL, GLOUCESTER ROAD SITE

STATEMENT OF OBJECTION BY THE

DENMEAD NEIGHBOURS' ASSOCIATION

ANNEXE 2 – NEIGHBOURS' SURVEY

CONTENTS

Summary of DNA Neighbours' Survey	1
Survey Methodology.....	1
Building Size and Location	1
Traffic Problems.....	1
Noise and Disturbance.....	2
Impact on Carlisle Park Users	2
Permanent Access Routes.....	2
Construction Access	2
Comments on Main Concerns – some samples	3
RESULTS	4
SURVEY METHODOLOGY	4
Coverage.....	4
Data collection and analysis	4
Quality management	4
EFFECTS PRIMARILY RELATED TO INCREASE IN PUPIL NUMBERS	5
Impediment to Through Traffic.....	5
Illegal and Problem Parking.....	11
Noise and Disturbance.....	17
PERMANENT IMPACT OF CHANGES TO BUILDING SIZE, LOCATION AND ACCESS ROUTES.....	23
Building location	24
Permanent Access Routes.....	25
Issues of particular importance to residents close to the site boundaries (i.e. whose properties share a boundary with the School site).....	26
Light Pollution	27
Conclusion	30
TEXT COMMENTS FROM DENMEAD NEIGHBOURS' SURVEY	31
SUMMARY OF ISSUES	31
LIST OF COMMENTS SPLIT BY RESPONDENT'S LOCATION.....	34

SUMMARY OF DNA NEIGHBOURS' SURVEY

SURVEY METHODOLOGY

The objective of the survey was to gather opinion from those potentially affected by the School's proposals. Previous work had identified two interlinked areas: concerns primarily related to the School operating with increased pupil numbers, and concerns arising from consequent changes to building size, location and access routes. The survey form contained both multiple choice and free text questions.

The survey was carried during July/August 2011. Survey forms were delivered to all households in the roads immediately adjacent to the Denmead School Gloucester Road site, namely Gloucester Road (GR), Scotts Drive (SD), Wensleydale Gardens (WG), and also to Carlisle Road (CR) as it is part of one potential access route to the site.

Of the 187 households, response rates by road ranged from 56% (GR) to 100% (SD) with an overall rate of 64%. The identity of respondents has been kept confidential.

Given this participation rate, and the fact that most questions yielded very clear common opinion, DNA believe that the results are an excellent representation of opinion generally amongst those potentially affected.

BUILDING SIZE AND LOCATION

- Residents were asked if they would agree to the school refurbishing its current buildings on the current footprint and building size, with no increase in pupil numbers and no change to access routes – only 2 respondents disagreed.
- Residents were overwhelmingly against both the School's proposals to roughly double the floor space (91%) and a change to a two storey building (82%).
- A huge majority (86%) of the residents want the school to stay on its existing footprint. If it is to be moved, it should be further into the site towards the central area, not close to the boundaries (75%).
- Respondents who live adjacent to the school site are very concerned about loss of privacy, noise and disturbance from activity in the buildings, light pollution from the school's high intensity security lights and damage to trees.

TRAFFIC PROBLEMS

- **Impediment to Flow:** 92% (WG), 96% (GR) and 100% (CR, SD) respectively of respondents identified a problem with traffic flow.
- The problems are at their worst in GR every weekday.
- There are also problems in WG and Wensleydale Road on weekdays.
- It is clear from the timing pattern that these congestion problems are strongly correlated with Denmead School Gloucester Road operations, with an additional impact on WG from the Denmead Pre-prep school in Wensleydale Road.
- Congestion in SD and CR is a problem, with the same morning and evening pattern; like the north end of Gloucester Road this may be affected to some extent by Carlisle Infants traffic.

- There is also a problem in CR and SD at weekends that does not appear to be related to Denmead activity.
- **Blockage of Roads:** the problems include road blockages, (68 out of 72 GR respondents), of high frequency (3-5 days a week in GR), mostly lasting up to 2-5 minutes, but with GR reporting 35% lasting more than 5 minutes.
- **Illegal & Problem parking:** parking on “keep clear” markings or across driveways is reported by 75% in GR and WG, 100% in SD and 50% in CR. Frequency was up to 5 days a week, with a clear correlation with Denmead drop-off and pick-up times.
- **Blocked driveways:** a particular source of annoyance to residents was having their driveway blocked by parents parking. 65% of respondents in GR reported this, although it also happens in CR, WG and SD and again is correlated to school times, particularly pick up time, and extends to 5 pm.
- **School events:** these are also a source of traffic problems, both during the week and at weekends. Residents commented that out of term time there was no traffic problem.

Growth in pupil numbers: is seen as making all the traffic problems worse, in some cases to the point where they would make life for some residents intolerable.

NOISE AND DISTURBANCE

- Respondents had concerns about noise and disturbance from weekend and evening activities and noise from sports activities, shouting and loud music. These can be at weekends or during the school day, and is more of a problem in the afternoons. There was concern about extension of the existing out-of-hours usage.
- Again, growth in pupil numbers is seen as leading to a severe adverse impact.

IMPACT ON CARLISLE PARK USERS

75% of respondents thought that increased use of Carlisle Park would have an adverse impact on the park. Many respondents referred to over-use already by the school and increased traffic.

PERMANENT ACCESS ROUTES

- Gloucester Road respondents oppose any increase in vehicle traffic.
- The two cul-de-sacs, Wensleydale Gardens and Scotts Drive, overwhelmingly oppose opening up their roads for any access, and Carlisle Road also opposes any access.
- Reasons given were unsuitability for through traffic, safety, privacy, and loss of amenity.
- Emergency access is seen as the beginning of opening up the cul-de-sacs for other access and is a major concern for residents.

CONSTRUCTION ACCESS

- 80% of respondents opposed construction traffic in *their* road
- Respondents in Wensleydale Gardens (currently proposed by the School as a route for construction traffic) thought that the road was unsuitable for construction traffic for a number of reasons, including the width of the road, the existing traffic problems

at the mouth of WG because of Denmead Pre-Preschool, and the safety issues related to the Carlisle Park pedestrian entrance.

COMMENTS ON MAIN CONCERNS – SOME SAMPLES

- **Carlisle Road:** “Increase in traffic and access to the premises.” “Scale of growth is not acceptable – traffic and disturbance too much to bear.” “Increase in numbers which will predominantly be from beyond walking range will lead to severe congestion at peak times”.
- **Gloucester Road:** “Additional traffic and chaos. Too much development (buildings) for size and location of site.” “Any increase in number of pupils.” “Increase in traffic/illegal parking.” “Insufferable traffic, illegal and irresponsible parking, rudeness of parents picking up and dropping off, and they often refuse to move their cars.”
- **Scotts Drive:** “Being so close to boundary with small garden means big impact on quality of day-to-day life. School site is too small for increased scale of build; increased disturbance, loss of privacy and impact on light and space.” “Increased vehicular traffic impacting my road and other roads in the area, exacerbated by opening up my road as an access route.”
- **Wensleydale Gardens:** “Wensleydale Gardens losing its status as a cul-de-sac, and in so doing losing the peace and quietness of the road, something that has kept me here for over 40 years.” “Safety of park users if Wensleydale Gardens is used as an entrance road for construction.” “The problems which will be caused by any type of access through Wensleydale Gardens . . . of equal concern is the loss of privacy, noise and disturbance etc which will be caused by having a building on our boundary.”

RESULTS

SURVEY METHODOLOGY

COVERAGE

Survey forms were delivered to all households in the roads surrounding or near to the School in the summer of 2011. 64% of these households completed the survey. Most of the remaining households could not be contacted, or did not reply within the survey timescale. A few preferred not to respond. Nearly all forms were completed by residents on their own. Details of coverage are as follow:

TABLE 1

Road	No of households	No of forms delivered	No of forms received	%coverage	%response
CR	18	18	12	100%	67%
GR	129	129	72	100%	56%
SD	12	12	12	100%	100%
WG	28	28	24	100%	86%
Total	187	187	120	100%	64%

DATA COLLECTION AND ANALYSIS

To preserve anonymity each address was given a pseudo-randomly generated identity number. 116 responses were collected on paper forms and entered into an internet-based survey analysis system. 4 responses were entered directly online. Analysis was done using the report-writing facilities in the online system and using a spreadsheet derived from data exported from the system.

QUALITY MANAGEMENT

15 survey entries were compared with their original forms to check the accuracy of data entry. From this we estimate that there was an error rate less than 1% in the multiple choice questions, and no significant error in the text comments entered. The error rate would need to be much higher to influence the survey conclusions, so errors have not been corrected at this stage.

EFFECTS PRIMARILY RELATED TO INCREASE IN PUPIL NUMBERS

We begin with these areas of concern because the survey has indicated that they would have the widest impact on the community. The questions on the survey form are given in italics.

IMPEDIMENT TO THROUGH TRAFFIC

- 1. In your experience, is there currently a problem with traffic flow (getting up and down the road) in your road, or in other roads?*

TABLE 2

Location of Household	Yes	No	Tot	%agreement
CR	12	0	12	100%
GR	69	3	72	96%
SD	12	0	12	100%
WG	22	2	24	92%
Total	115	5	120	

Conclusion: Impediment to traffic flow is major concern throughout the area

- 2. If so, Please indicate how often this happens (please only consider roads where you have seen this yourself):*

The following table shows the numbers reporting a problem in each street. Respondents were allowed to comment on any street.

TABLE 3

Road Affected	Numbers reporting problem (ticks)			
	< once/wk	1-2 dys/wk	3-5 dys/wk	at weekends
CR	2	2	17	10
GR	4	5	90	15
SD	4	4	4	5
WG	0	3	15	3
WR	1	5	11	0

To give as good a picture as possible of the extent of problems seen by households in each street, we can present the intensity of the problem. This is obtained by dividing the total number of reports of the problem in that street by the number of respondents in that street. Note that since these reports include those made by people who do not live in the street, the intensity may be more than 1.0 This presentation gives a fairer picture of the relative problems in each street. Wensleydale Road is excluded because there are no respondents from there.

TABLE 4

Road of residence	Problem intensity (reports/respondents in road)			
	< once/wk	1-2 dys/wk	3-5 dys/wk	at weekends
CR	0.17	0.17	1.42	0.83
GR	0.06	0.07	1.25	0.21
SD	0.33	0.33	0.33	0.42
WG	0.00	0.13	0.63	0.13

Conclusion: This is a widespread problem across the area. It is seen at its worst in Gloucester Road on every weekday, in Carlisle Road at weekends, in Wensleydale Gardens and Wensleydale Road on every weekday and in Scotts Drive at weekends.

3. *At which times of day does the problem occur? (hourly period beginning... please only consider roads where you have seen this yourself). Please tick as many as applicable:*

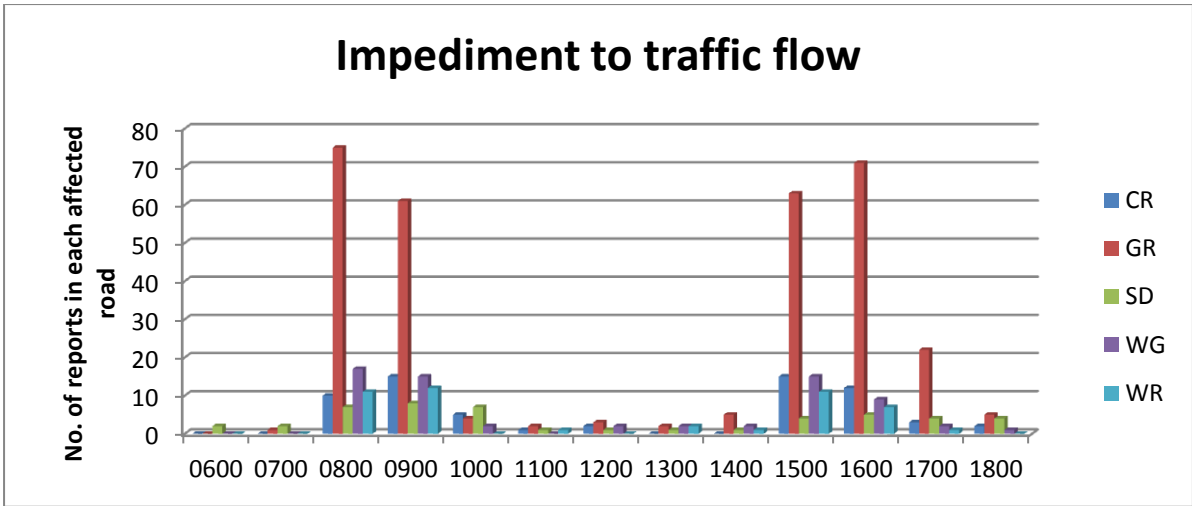


FIGURE 1

The following table shows the intensity (numbers of reports) per respondent (ticks) in each hourly period, in each of the four roads.

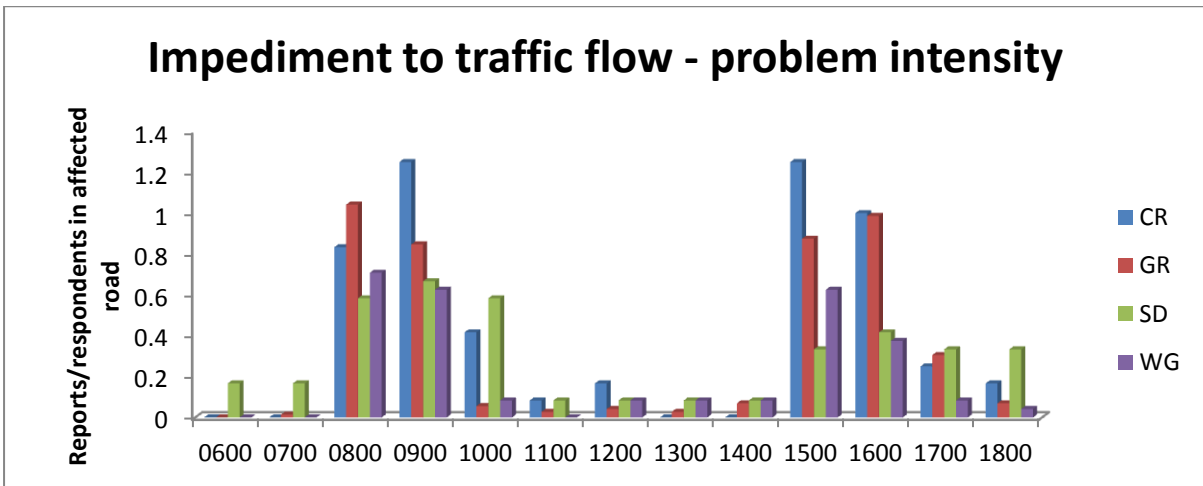


Figure 2

It is clear that the problem is at its worst across all roads during the Denmead School drop off and pickup times. Comments in response to later questions confirm that though there are overall traffic issues in Gloucester Road, the problem is greatly exacerbated by School-related traffic. Other significant specific causes are:

- congestion in Wensleydale Road/Gardens from drop-off and pickup for Denmead Infants School in Wensleydale Road;
- congestion in Carlisle Road and Gloucester Road, from drop-off and pickup for Carlisle School;

There is also a more spread-out congestion problem in Carlisle Road & Scotts Drive

Conclusion: Congestion problems coincide with School pickup & drop-off times

Blockage of Roads

4. *Have you seen occasions when a road was blocked and traffic was unable to move in either direction due to lack of space for cars to let each other pass?*

Table 5

Residence	Yes	No	Tot	%agreement
CR	9	3	12	73%
GR	68	4	72	92%
SD	12	0	12	100%
WG	13	11	24	58%

5. *If so, how often does this occur? ... please only include roads where you have seen this yourself:*

TABLE 6

Road affected	Frequency of blockage – total reports			
	Less than once a week	1-2 days/week	3-5 days/week	at weekends
CR	2	2	17	10
GR	16	5	90	15
SD	1	4	4	5
WG	6	5	16	3
WR	1	5	11	0

6. *... and please say when this happens – please only include roads where you have seen the problem yourself. Please tick as many as applicable:*

The following chart shows the numbers of responses (ticks) in each hourly period, in each road.

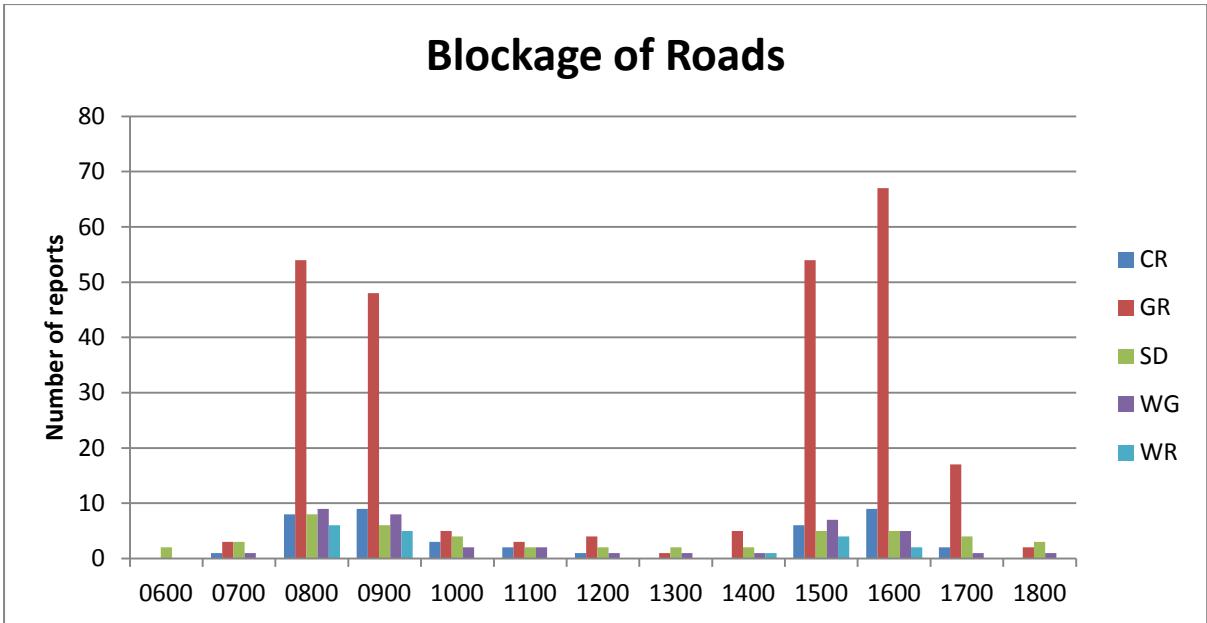


FIGURE 3

Once again, a more useful picture may be given if we divide the number of reports by the number of respondents in the road:

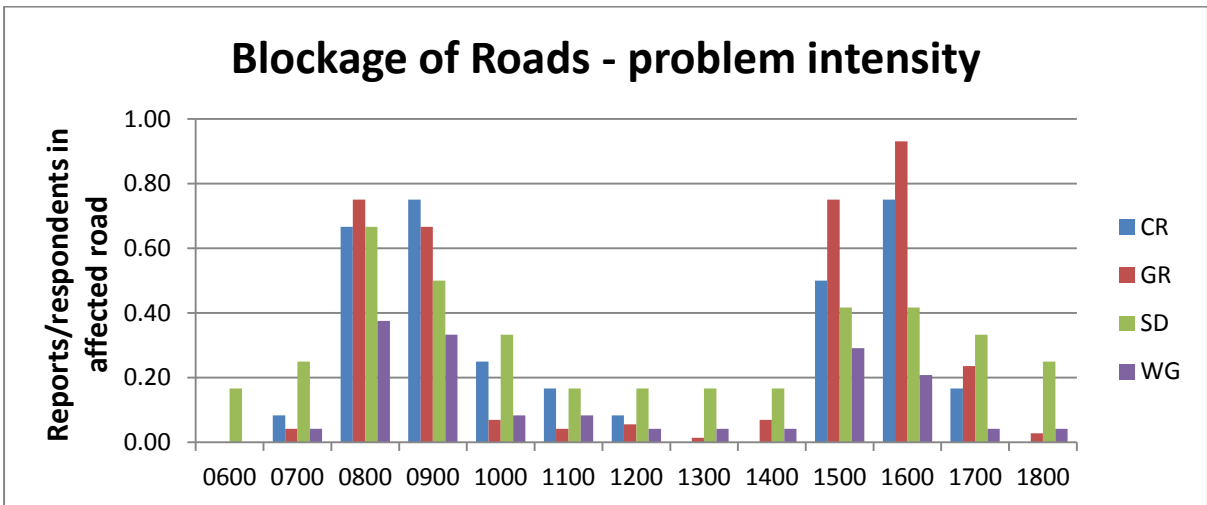


FIGURE 4

1. *What length of delay does this typically create?*

There were 70 reports of delay. This chart shows the percentage of respondents reporting each length of delay, analysed by their street of residence (the question did not ask respondents to identify the affected street). More than half of these respondents report delays of over 5 minutes. All roads report significant delay, especially Carlisle Road.

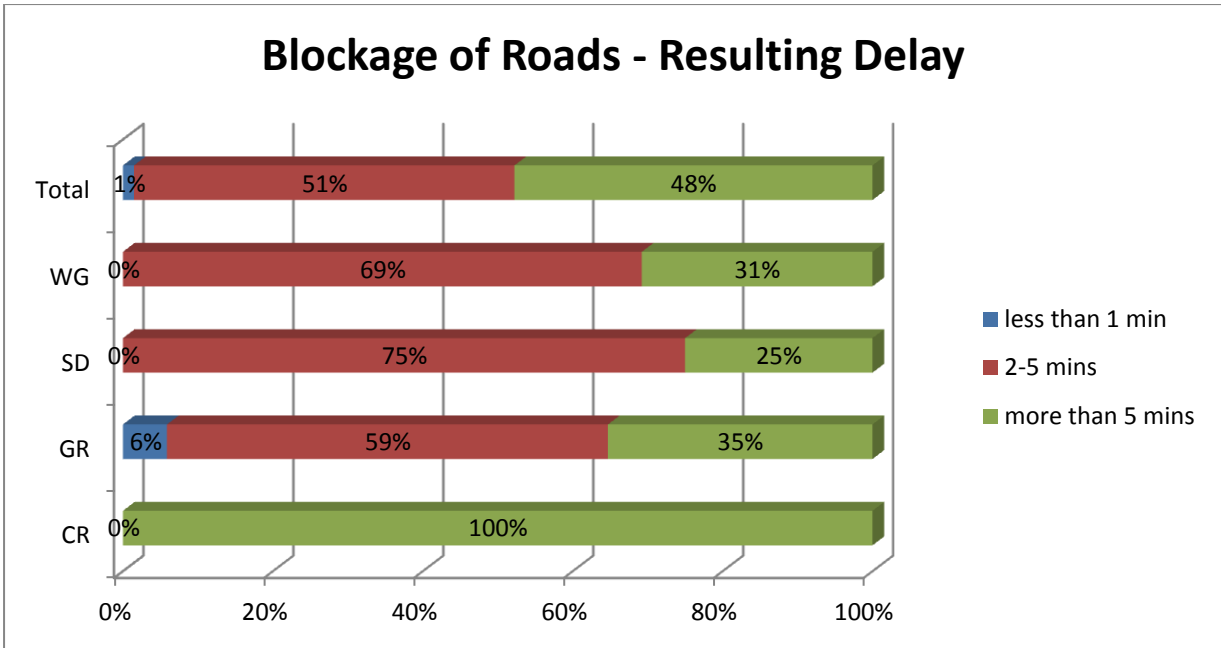


FIGURE 5

Sometimes this leads to angry confrontations. How often have you seen this?

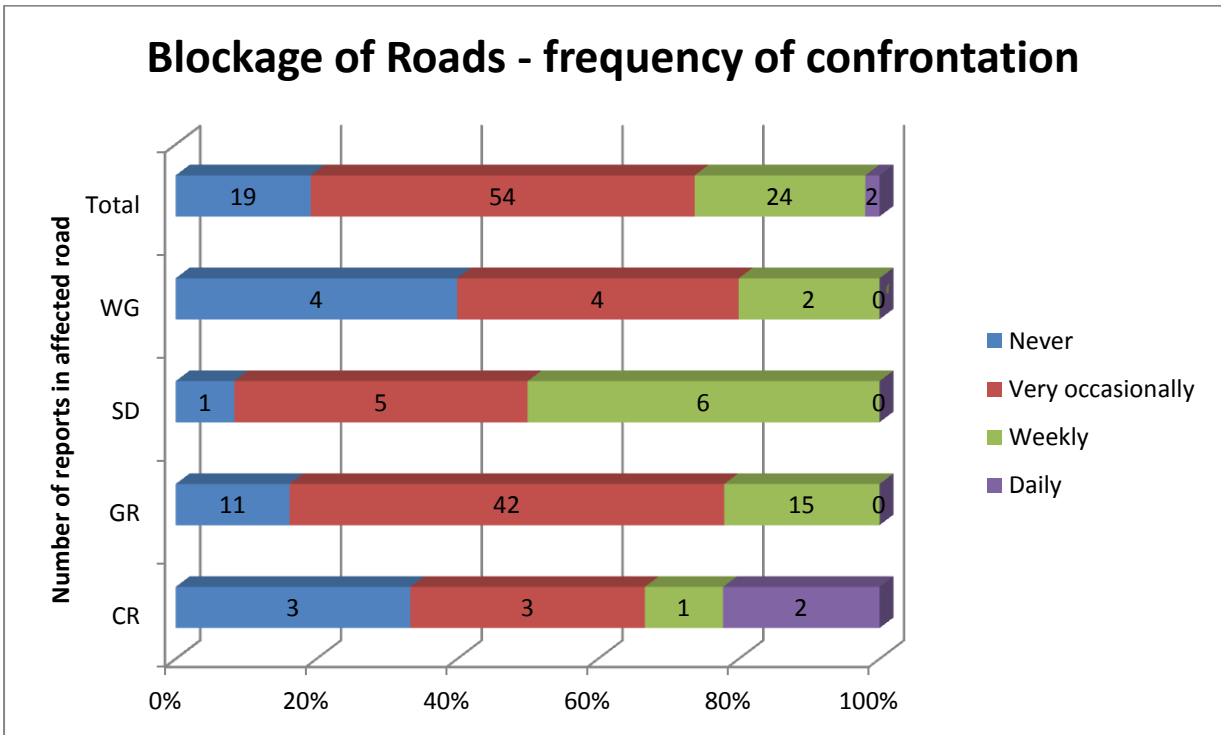


FIGURE 6

ILLEGAL AND PROBLEM PARKING

7. *Have you seen illegal or problem parking (e.g. parking on hatched school 'keep clear' markings, or parking across driveways?)*

TABLE 7

Location of Household	Yes	No	Tot	%agreement
CR	6	6	12	50%
GR	54	18	72	75%
SD	12	0	12	100%
WG	18	6	24	75%
Total	90	30	120	

8. *If so, how often, and when – please cover your road and any others where you have seen the problem.*

TABLE 8

Road Affected	Frequency of problem parking – No. of reports			
	Less than once a week	1-2 days/week	3-5 days/week	at weekends
CR	2	5	3	5
GL	18	21	32	4
SD	3	1	2	5
WG	4	7	8	1
WR	3	3	4	0

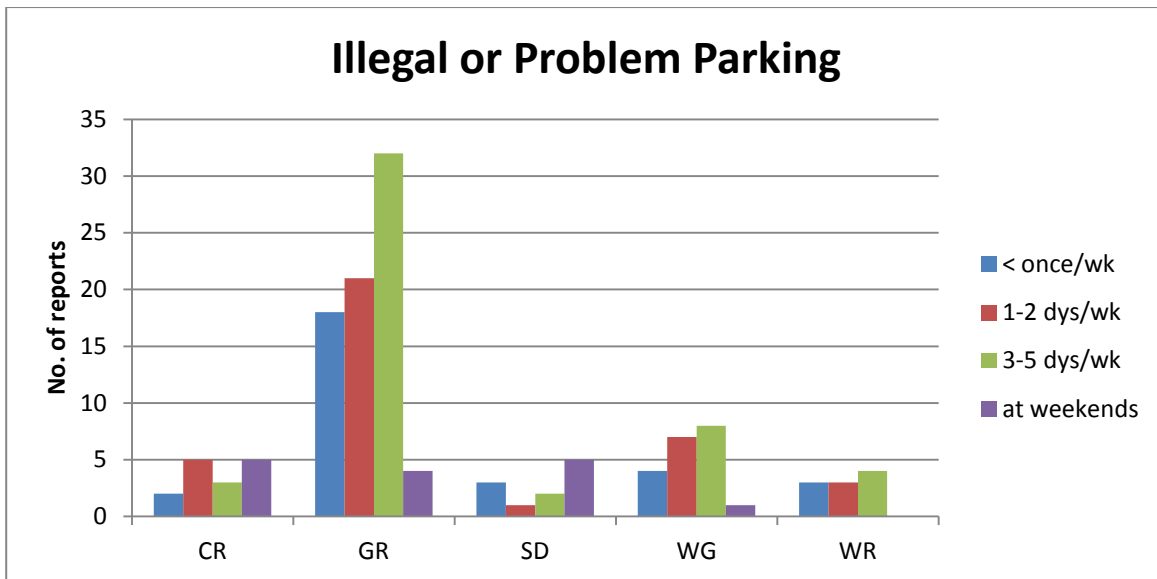


FIGURE 7

Once again, we can adjust the numbers to reflect the number of respondents in each road...

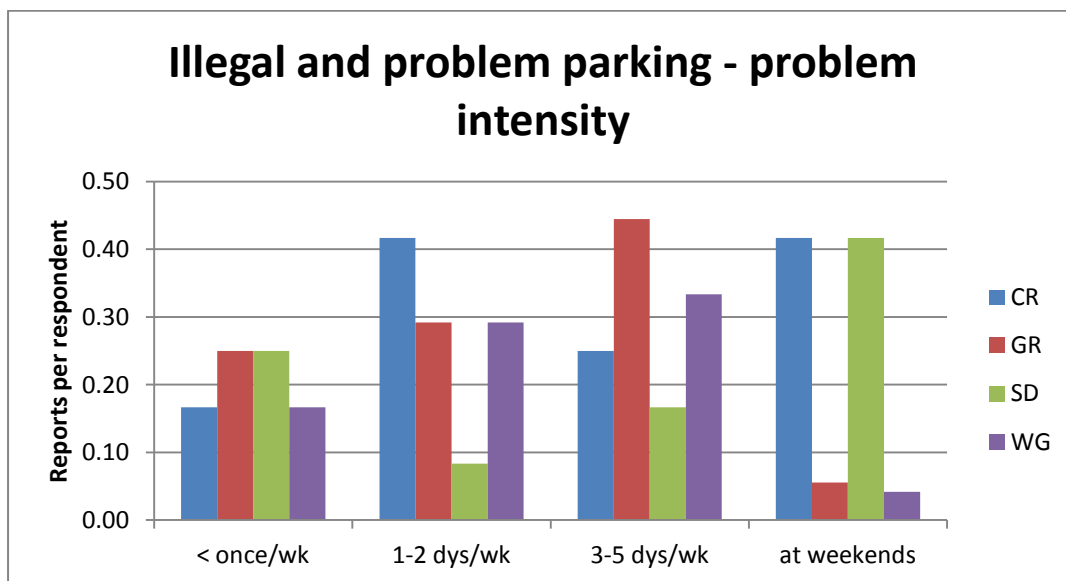


Figure 8

At which times have you seen the problem? Please tick as many as applicable:

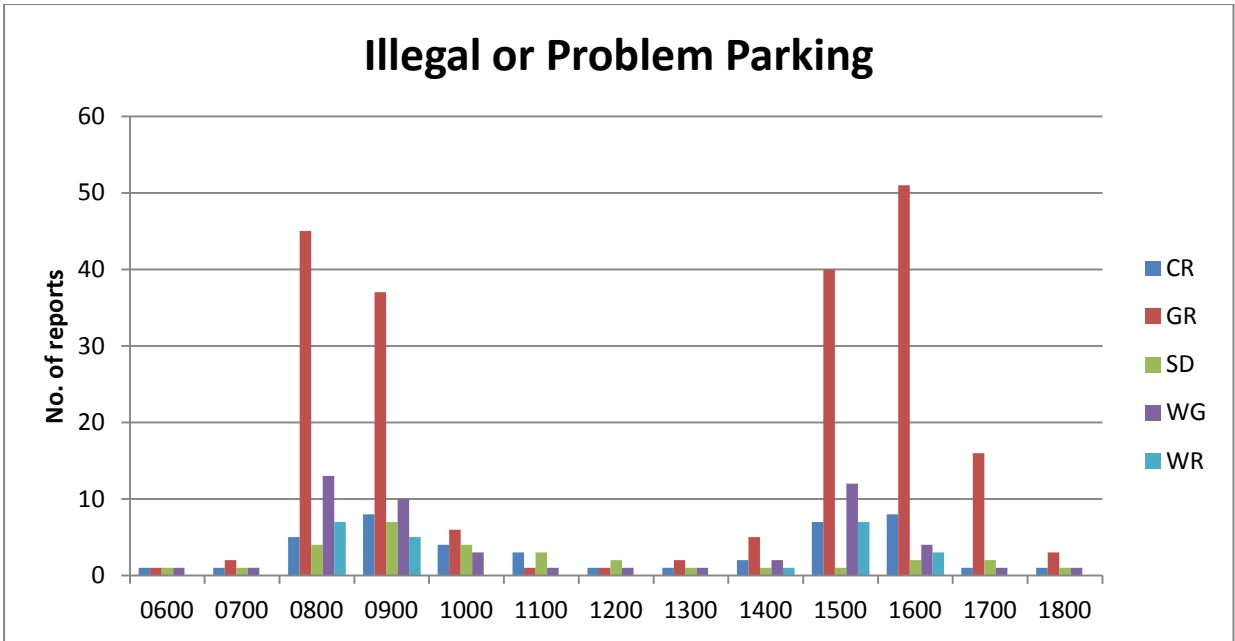


FIGURE 9

Adjusted for number of respondents per road

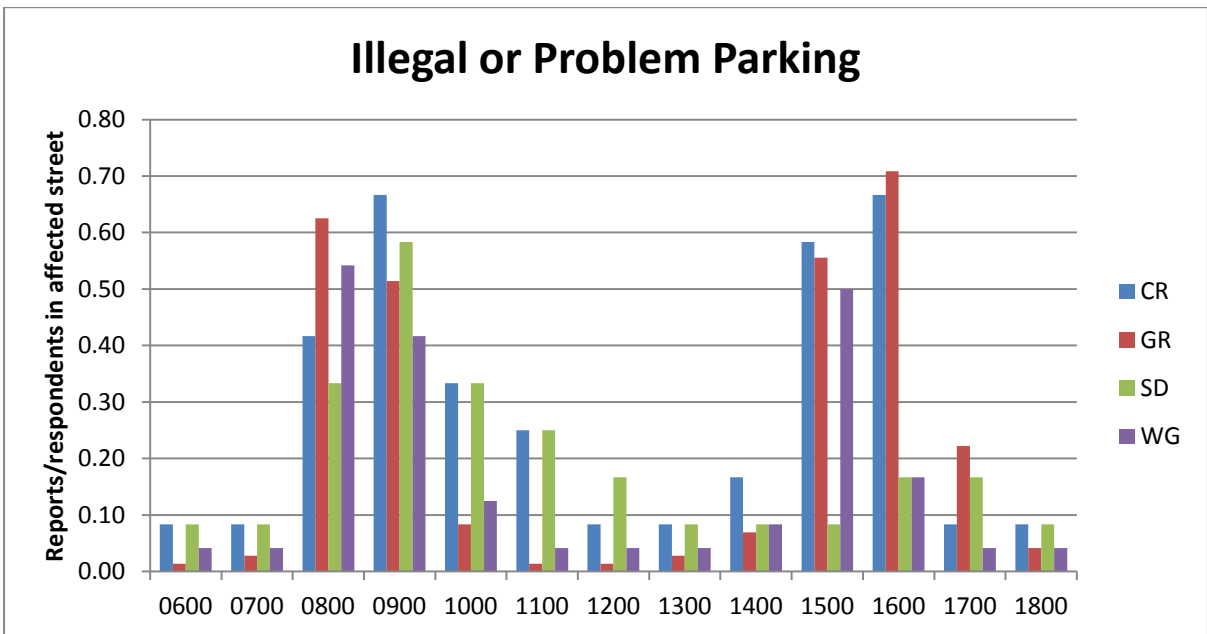


FIGURE 10

9. *Are you ever unable to get out of your driveway because of parents parking to drop off/pick up their children from school?*

TABLE 9

Location of Household	Yes	No	Tot	%agreement
CR	3	9	12	25%
GR	47	25	72	65%
SD	1	11	12	8%
WG	3	21	24	13%
Total	54	66	120	

If so, how often and when?

TABLE 10

Road	Frequency of driveway blockage – No. of reports			
	Less than once a week	1-2 days/week	3-5 days/week	at weekends
CR	2	1	0	0
GR	28	17	3	0
SD	0	0	1	1
WG	2	1	0	0

10. And when? Please tick as many as applicable:

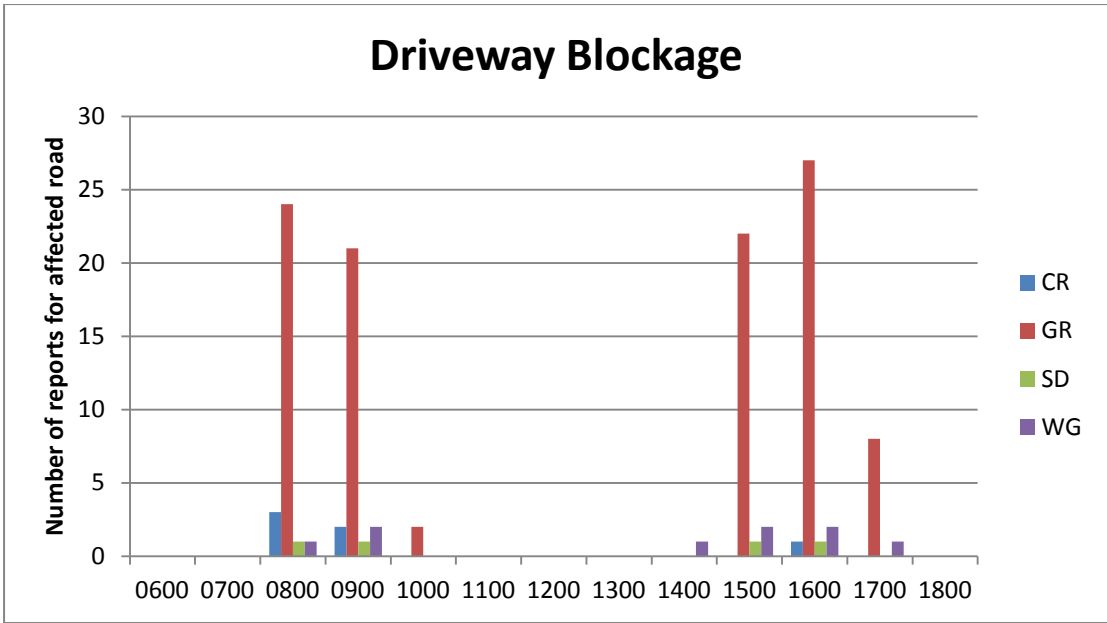


FIGURE 11

The times of blockages to driveways are highly correlated to drop-off and collection times.

Significantly worse for Gloucester Road residents than the other roads. Though Carlisle Road also affected by Carlisle School, and Wensleydale Gardens by Denmead's pre-prep.

11. Have traffic problems ever hindered the access of emergency vehicles to your road?

Yes No

TABLE 11

Location of Household	Yes	No	Tot	%agreement
CR	1	11	12	8%
GR	6	66	72	8%
SD	9	3	12	75%
WG	1	22	23	4%
Total	17	102	119	

12. *Other comments on traffic flow and Parking (e.g. correlation with school dropping off times, differences in and out of term, etc etc)?*

This table summarises the main issues mentioned, and the number of comments mentioning each issue

TABLE 12

Issue	Number of Comments
Traffic flow problems correlated with School activities	41
Problems connected with School Events (sports days, fireworks...)	30
Parking problems correlated with School activities	24
Problems associated with Carlisle Road Infants School	9
Inconsiderate behaviour by parents	6
Problems associated with waste collection	4
Problems caused by parking for Carlisle Pk	4
Term-time noise	2
Emergency vehicle access	2
All-day traffic	2
Teacher parking	2
Grand Total	126

Comments clearly indicated that traffic and parking issues associated with dropping off and collection of pupils were of greatest concern overall (65 mentions) followed by problems caused by specific School ‘Events’. These comments reinforce the answers to numerical questions about the timing of problems. Comments about parking for Carlisle Park came from Wensleydale Gardens and Scotts Drive. The issues with two or less mentions came from Gloucester Road residents only, probably because more people responded from this road.

Sample comment: “Traffic flow and parking problems happen at school pick up time and evening when school has after hours activities/social evenings. Road clear in out of term time”.

NOISE AND DISTURBANCE

13. Do you have any problems with noise and disturbance from school activities on the site?
 Yes No

This chart analyses responses according to whether respondents are adjacent to the site or not.

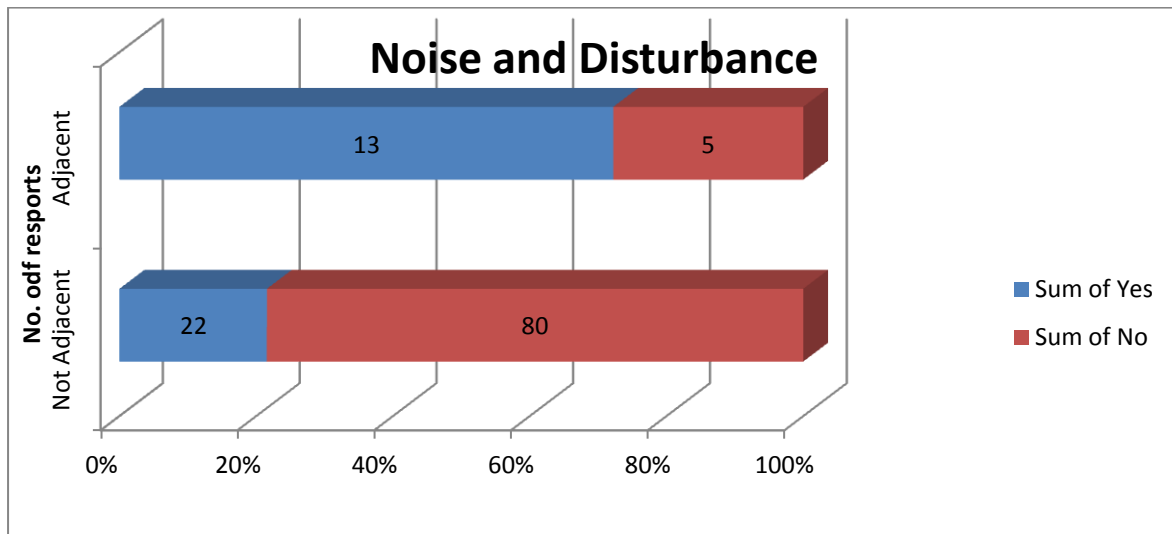


FIGURE 12

14. If so, what is the nature of the problem(s)?

This table summarises the main issues mentioned, and the number of comments mentioning each issue:

TABLE 13

Issue	Comments
Noise & disturbance arising from weekend & evening activities	11
Noise from sports activities	7
Shouting by Children & parents at events & loud music	7
Shouting by Children & parents at drop-off times	1
Noise from School Coaches being left running	1
Damage to residents' vehicles by School parents	1

Sample Comment: "Sports days, school fair, fireworks, the operatic society, all intrude and are a nuisance. The normal school day noise is not a problem".

15. How often do they occur?

Here we have analysed the number of reports both by respondent's location, and whether they are adjacent to the site, or not.

TABLE 14

Road residence	of	Adjacent to site	Frequency of noise and disturbance			
			Less than once a week	1-2 days/week	3-5 days/week	at weekends
CR		No	1	0	1	2
GR		Yes	1	0	1	2
		No	6	3	0	0
SD		Yes	2	2	0	0
		No	3	1	0	0
WG		Yes	2	0	2	2
		No	3	0	3	0

16. And when? Please tick as many as are applicable:

TABLE 15

0600	0700	0800	0900	1000	1100	1200	1300	1400	1500	1600	1700	1800
0	0	4	7	7	9	12	14	14	17	16	10	6

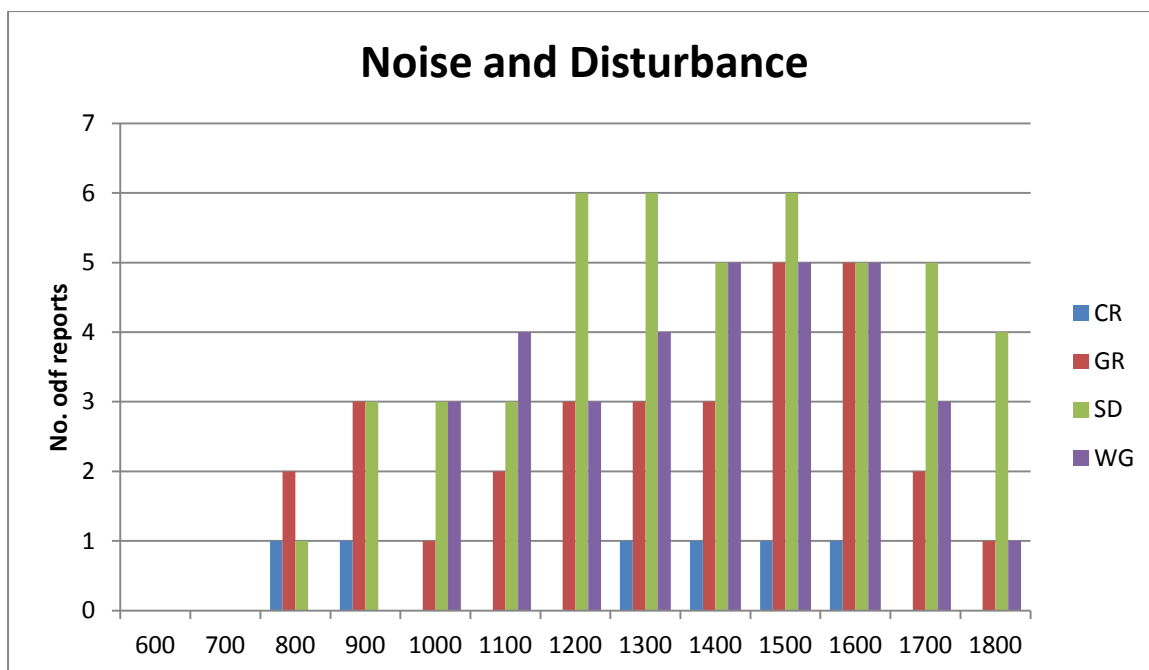


FIGURE 13

17. What is the relationship between occurrence of these problems and the timing of school activities? Do they occur:

18. In term-time, during the School day? Yes No

TABLE 16

Location of Household	Yes	No	Tot	%agreement
CR	2	0	2	100%
GR	9	4	13	69%
SD	3	4	7	43%
WG	7	2	9	78%
Total	21	10	31	

So-called 'Out of hours' operation, i.e.:

19. In term-time, outside the School day or in the evening? Yes No

20. Out of term, any time on a weekday? Yes No

21. At weekends, in or out of term? Yes No

This table shows the number of reports of noise and nuisance, analysed by whether respondents are adjacent to the School site or not.

TABLE 17

Location	In Term-time	Outside School day or in evening	Out of term on weekday	Out of term at weekend
Not Adjacent	17	14	6	12
Adjacent	11	8	2	9
Grand Total	28	22	8	21

Same data analysed by respondent's location

TABLE 18

Location	In Term-time	Outside School day or in evening	Out of term on weekday	Out of term at weekend
CR	2	1	1	1
GR	13	10	4	8
SD	4	3	1	4
WG	9	8	2	8
Grand Total	28	22	8	21

22. Please describe any particular problems from out of hours operation

This question yielded 17 comments, which have not been tabulated since they raised issues covered in responses to other questions.

Impact on Carlisle Park users

23. Do you think that expansion would adversely affect Carlisle Park users? Yes No

TABLE 19

Location of Household	Yes	No	Tot	%agreement
CR	7	5	12	58%
GR	32	40	72	44%
SD	8	4	12	67%
WG	22	2	24	92%
Total	69	51	120	

24. If so, why? (e.g. more use as playing field, more traffic to school..)

This table summarises the main issues mentioned, and the number of comments mentioning each issue:

TABLE 20

Issue	Number of comments
Traffic flow correlated with School activities	25
Over-use by school	25
Parking for Carlisle Park	8
Loss of character/amenity	6
Grand Total	64

The following comment from a Wensleydale Gardens resident describes the issues and the logic behind them: “The available grassed area within the school grounds will be reduced by the proposed expansion in the footprint of school buildings. This is likely to increase reliance on Carlisle Park for school recreation and sports activities, thus reducing its availability to residents and other users. It is also apparent that the school is already taking credit for Carlisle Park in order to meet minimum site size, as defined in school guidelines. This reliance on Carlisle Park will increase should the number of pupils at Denmead school expand further. There is likely to be other associated impacts from the expansion in pupil numbers; increased traffic in and around the streets leading to Carlisle Park. There will also be increased noise levels affecting users of the Park”.

Future consequences of increase in pupil numbers

25. The questions to date have covered the current situation. To conclude this section please could you now describe what you think the effect of various increases in pupil numbers would be, should the school succeed in achieving them. Please rate the future impact as follow:

- 1: No additional impact
- 2: Additional Impact resulting in some adverse effect on you
- 3: Additional impact resulting in very significant adverse effect on you
- 4: Additional impact resulting in an intolerable situation (e.g. thinking about having to move)

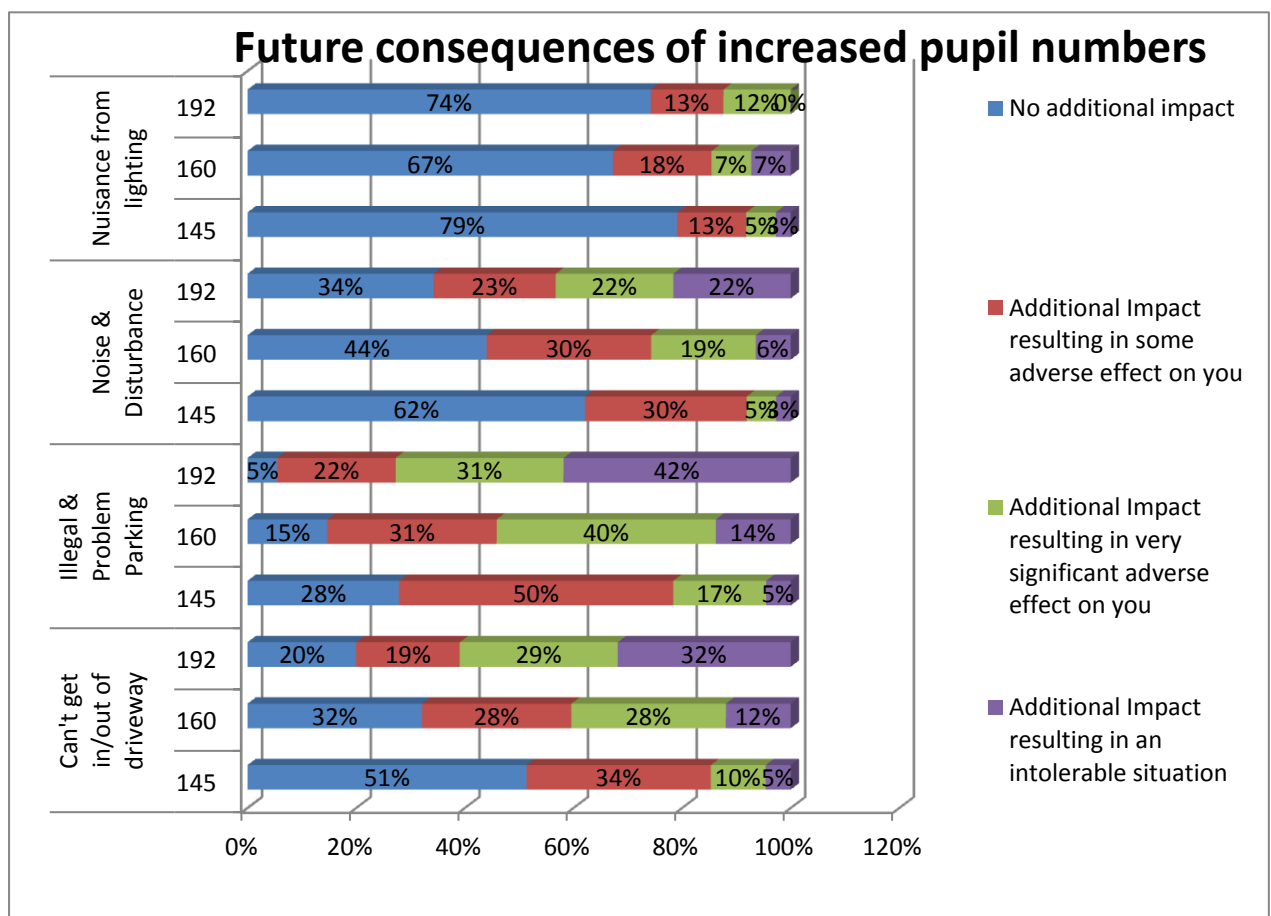


FIGURE 14

PERMANENT IMPACT OF CHANGES TO BUILDING SIZE, LOCATION AND ACCESS ROUTES

Most of the following questions have in effect been answered through petitions, public meetings and correspondence. However given that we may be forced through the planning process to weigh up alternatives, it will help our case to collect some information on relative impacts. Many of these will depend on specific location.

Building expansion in general

26. *If the School proposed to refurbish its current buildings on the current footprint and building size, with no increase in pupil numbers and no change to access routes, would you agree?*

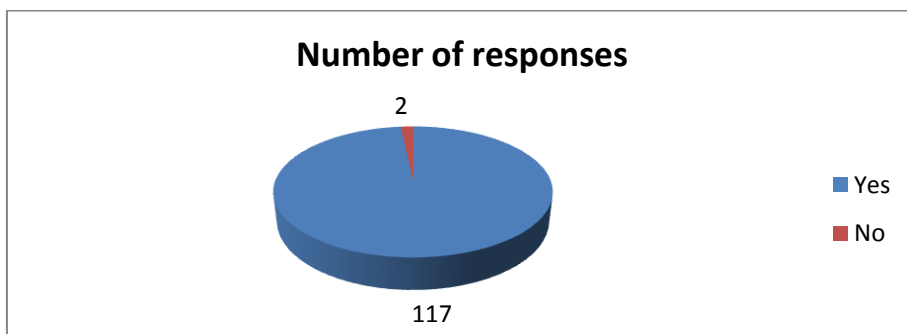


FIGURE 15

27. *Are you in favour of the School's proposals to roughly double floor space?*

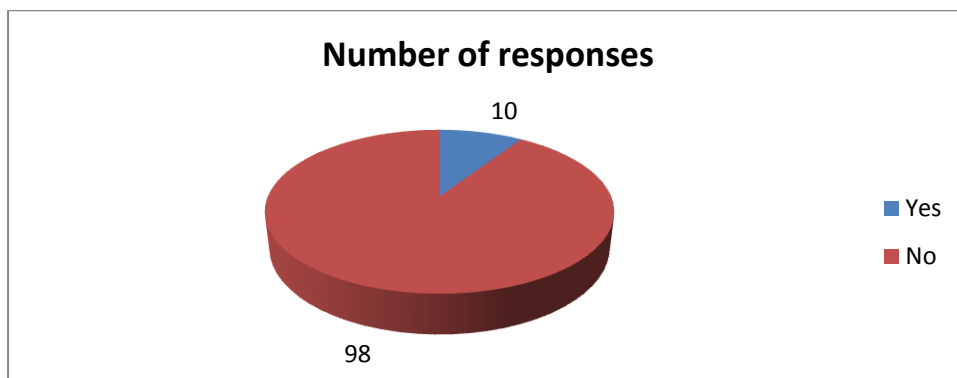


FIGURE 16

28. *Are you in favour of the School's preference for two storey as opposed to single storey buildings?*

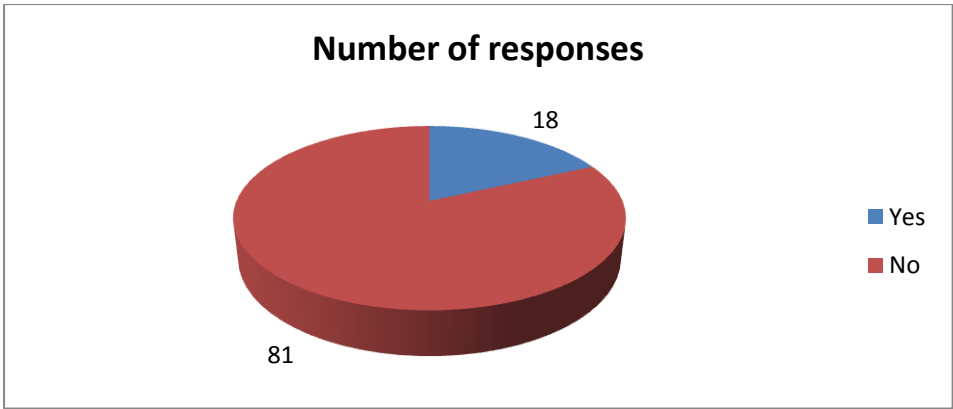


FIGURE 17

BUILDING LOCATION

29. Are you in favour of any rebuilding being confined to the existing footprint (i.e. the land the existing buildings occupy)?

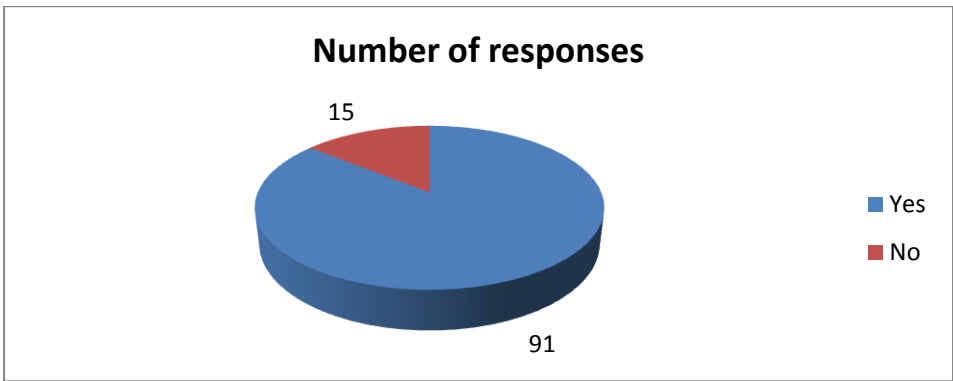


FIGURE 18

30. The school propose moving from the existing footprint. If the buildings were to be moved, what would be the least bad situation?

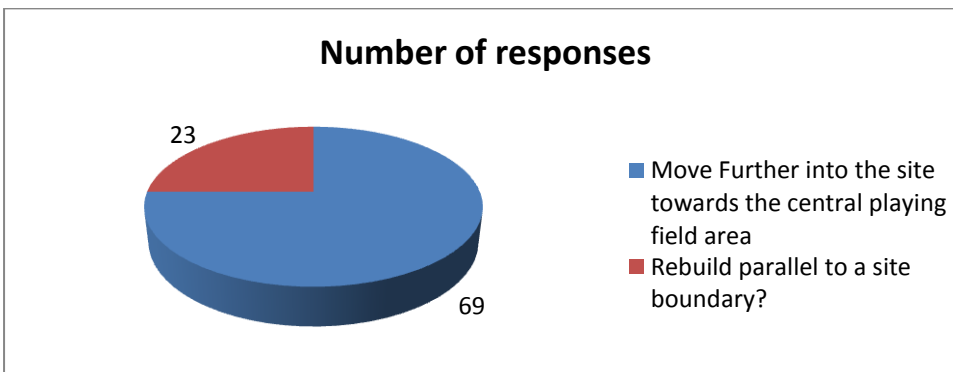


FIGURE 19

PERMANENT ACCESS ROUTES

The School is currently proposing pedestrian and service/staff access via Gloucester Road and expansion of existing controlled pupil access via Carlisle Park car park, and emergency access via Wensleydale Gardens. Scotts Drive has been ruled out, but all of these options could change in the future.

31. Do you agree with use of **your road** for permanent access for each type of traffic. Note: All types of traffic currently go via Gloucester Road so if you live there please consider whether you agree with having **additional** traffic of each type?(Place Y or N in table).

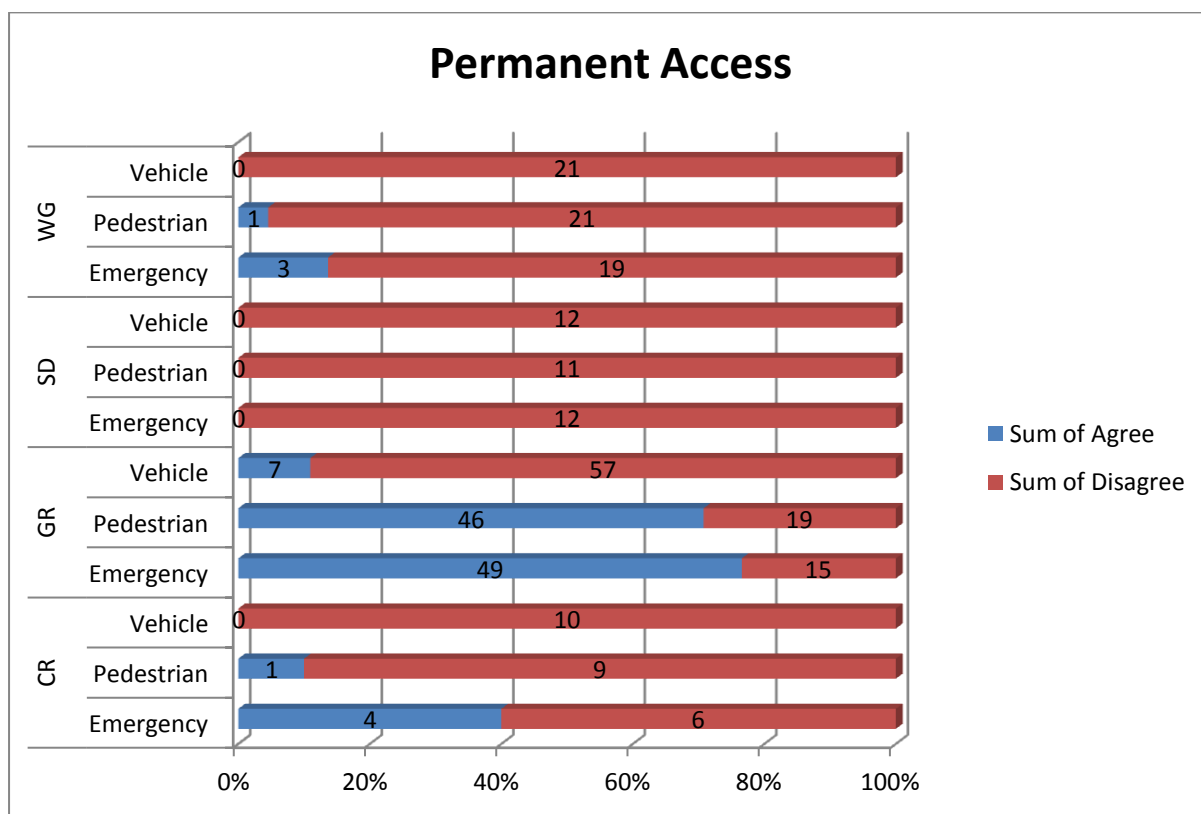


FIGURE 20

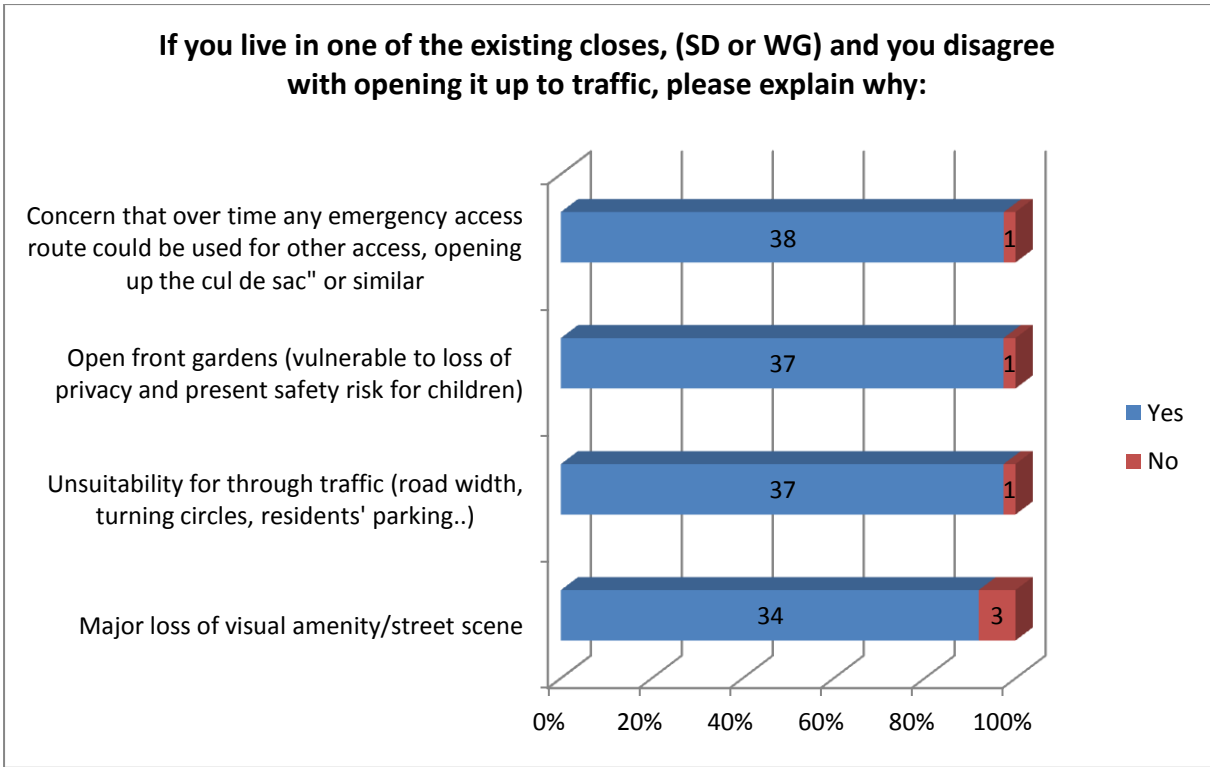


FIGURE 21

ISSUES OF PARTICULAR IMPORTANCE TO RESIDENTS CLOSE TO THE SITE BOUNDARIES (I.E. WHOSE PROPERTIES SHARE A BOUNDARY WITH THE SCHOOL SITE)

32. Please score the following concerns in terms of importance to you as an individual householder. Please tick one column per concern. You may add new concerns if you wish.

The following table shows the response to this question in terms of numbers choosing each option, in percentage and absolute terms:

TABLE 21

	Not important		Quite important		Very important		Extremely important		Total	
	%	#	%	#	%	#	%	#	%	#
Loss of privacy	2.8	1	5.6	2	8.3	3	83.3	30	100.0	36
Noise & disturbance from adjacent equipment e.g. heating/ventilation/oillets	5.6	2	11.1	4	16.7	6	66.7	24	100.0	36
Damage to trees on the boundary	8.8	3	14.7	5	23.5	8	52.9	18	100.0	34

LIGHT POLLUTION

33. Does stray light from lighting systems on the school site cause you a problem?

This table analyses responses according to whether the respondent is adjacent to the site or not.

TABLE 22

	Yes	No	Tot	%agree
Adjacent	8	10	18	44%
Not adjacent	2	100	102	2%
Total	10	110	120	8%

34. If so, please describe the problem and say when it occurs.

Eight residents commented on the problems caused by security lights, with the Jubilee Sports Hall being mentioned in particular.

SampleComment: “High intensity security lights are positioned all around the buildings. These shine all night every night: whether in term time or not (they are not linked to motion sensors). Standard curtains/blinds are unable to shield all the light and annoying light shines into bedrooms”.

Access for construction traffic

The school currently proposes that construction traffic go through Wensleydale Gardens. Other conceivable options are through Gloucester Road or Carlisle Road/Scotts Drive though the School have ruled out the latter. Presumably no resident would actively welcome construction traffic in their area, but the fact is that residents’ demanded ‘no increase, same footprint’ outcome will result in some construction traffic in connection with refurbishment. We are asking these questions because our traffic consultant feels it would be valuable to quantify the degree of opposition to such traffic.

35. Do you object to construction traffic through **your road**? Yes No

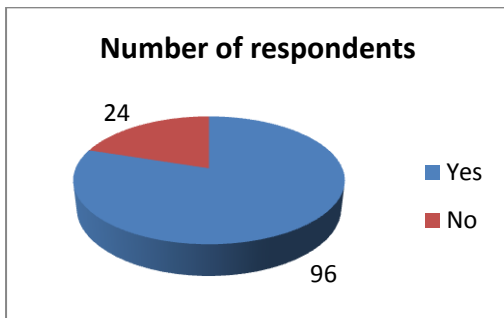


FIGURE 22

36. Please state your degree of agreement with the following possible reasons for objecting to construction traffic in your road. Please tick N/A for reasons not applicable to your street

TABLE 23

Concern	Do not agree	Disagree slightly	Agree slightly	Agree completely	Not Applicable to	Total
The width of the road, given the amount of parking	0.0% 0	0.0% 0	1.1% 1	97.8% 88	1.1% 1	100% 90
Traffic problems in Gloucester Road	0.0% 0	0.0% 0	2.2% 2	70.0% 63	27.8% 25	100% 90
The traffic problems at the mouth of Wensleydale Gardens that already exist at some times of day	0.0% 0	1.1% 1	1.1% 1	36.0% 32	61.8% 55	100% 89
Safety issues in Gloucester Road	0.0% 0	0.0% 0	4.4% 4	62.6% 57	33.0% 30	100% 91
Traffic problems in Carlisle Road/Scotts Drive	0.0% 0	0.0% 0	1.1% 1	23.3% 21	75.6% 68	100% 90
Safety issues in Carlisle Road/Scotts Drive	0.0% 0	0.0% 0	1.1% 1	25.0% 22	73.9% 65	100% 88
The safety issues related to the Carlisle Park entrance to Wensleydale Gardens	0.0% 0	0.0% 0	4.5% 4	36.0% 32	59.6% 53	100% 89
The safety issues arising from the amount of pedestrian use of the Wensleydale Gardens, especially by children/families, many of whom use the road not the pavement	0.0% 0	0.0% 0	4.7% 4	38.4% 33	57.0% 49	100% 86

CONCLUSION

37. What is your single biggest concern about the School's plans?

The following table summarises the main 'themes' emerging from the numerous responses to this question, analysed by respondent's location.

TABLE 24

Theme	Number of comments				
	C R	G R	S D	W G	Grand Total
Increased traffic congestion & parking problems	10	53	5	3	71
Concern that cul-de-sac might be opened for access			4	17	21
Spoil the quiet nature of cul de sac			1	13	14
Increased noise & pollution		4	4	4	12
Scale of growth too much to bear	1	7	2	2	12
Issues particularly important to adjacent neighbours		2	8		10
Safety issues		4	1	3	8
Noise and disturbance from construction traffic				6	6
Grand Total	11	70	25	48	154

38. Are there any other issues not covered in this survey that you wish to highlight?

Text Comments are categorised and shown below.

TEXT COMMENTS FROM DENMEAD NEIGHBOURS' SURVEY

SUMMARY OF ISSUES

Q14 OTHER COMMENTS ON TRAFFIC FLOW AND PARKING (E.G. CORRELATION WITH SCHOOL DROPPING OFF TIMES, DIFFERENCES IN AND OUT OF TERM, ETC ETC)?

This table summarises the main issues mentioned, and the number of comments mentioning each issue:

TABLE 25

Issue	Number of Comments
Traffic flow problems correlated with School activities	41
Problems connected with School Events (sports days, fireworks...)	30
Parking problems correlated with School activities	24
Problems associated with Carlisle Road Infants School	9
Inconsiderate behaviour by parents	6
Problems associated with waste collection	4
Problems caused by parking for Carlisle Pk	4
Term-time noise	2
Emergency vehicle access	2
All-day traffic	2
Teacher parking	2
Grand Total	126

Comments clearly indicated that traffic and parking issues associated with dropping off and collection of pupils were of greatest concern overall (65 mentions) followed by problems caused by specific School 'Events'. These comments reinforce the answers to numerical questions about the timing of problems. Comments about parking for Carlisle Park came from Wensleydale Gardens and Scotts Drive. The issues with two or less mentions came from Gloucester Road residents only, probably because more people responded from this road.

Sample comment: “Traffic flow and parking problems happen at school pick up time and evening when school has after hours activities/social evenings. Road clear in out of term time”.

Q16 NOISE & DISTURBANCE – WHAT IS THE NATURE OF THE PROBLEM(S)?

THIS TABLE SUMMARISES THE MAIN ISSUES MENTIONED, AND THE NUMBER OF COMMENTS

mentioning each issue:

Table 26

Issue	Comments
Noise & disturbance arising from weekend & evening activities	11
Noise from sports activities	7
Shouting by Children & parents at events & loud music	7
Shouting by Children & parents at drop-off times	1
Noise from School Coaches being left running	1
Damage to residents’ vehicles by School parents	1

Sample Comment: “Sports days, school fair, fireworks, the operatic society, all intrude and are a nuisance. The normal school day noise is not a problem”.

Q22 PLEASE DESCRIBE ANY PARTICULAR PROBLEMS FROM OUT OF HOURS OPERATION

This question yielded 17 comments, which have not been tabulated since they raised issues covered in responses to other questions.

Q24 WHY WOULD EXPANSION ADVERSELY AFFECT CARLISLE PARK USERS?

This table summarises the main issues mentioned, and the number of comments mentioning each issue:

Table 27

Issue	Number of comments
Traffic flow correlated with School activities	25
Over-use by school	25
Parking for Carlisle Park	8
Loss of character/amenity	6
Grand Total	64

The following comment from a Wensleydale Gardens resident describes the issues and the logic behind them: *“The available grassed area within the school grounds will be reduced by the proposed expansion in the footprint of school buildings. This is likely to increase reliance on Carlisle Park for school recreation and sports activities, thus reducing its availability to residents and other users. It is also apparent that the school is already taking credit for Carlisle Park in order to meet minimum site size, as defined in school guidelines. This reliance on Carlisle Park will increase should the number of pupils at Denmead school expand further. There is likely to be other associated impacts from the expansion in pupil numbers; increased traffic in and around the streets leading to Carlisle Park. There will also be increased noise levels affecting users of the Park”.*

Q38 LIGHT POLLUTION - PLEASE DESCRIBE THE PROBLEM AND WHEN IT OCCURS

Eight residents commented on the problems caused by security lights, with the Jubilee Sports Hall being mentioned in particular.

SampleComment: *“High intensity security lights are positioned all around the buildings. These shine all night every night: whether in term time or not (they are not linked to motion sensors). Standard curtains/blinds are unable to shield all the light and annoying light shines into bedrooms”.*

LIST OF COMMENTS SPLIT BY RESPONDENT'S LOCATION

Q14 OTHER COMMENTS ON TRAFFIC FLOW AND PARKING (E.G. CORRELATION WITH SCHOOL DROPPING OFF TIMES, DIFFERENCES IN AND OUT OF TERM, ETC ETC)?

CARLISLE ROAD

Daily problem with traffic flow + parking during school term, not just start and end of school day, also school parents evening, concert, football meetings, clubs, summer fete, fireworks evening road blocked. Too narrow for so much traffic.

Re: Q2 Thoughtless Parking when they have an event involving parents. Inconvenience navigating Gloucester Road at going-in and coming out times during term

Re: Q3 Weekend Park Traffic, Carlisle & Denmead Schools Parking. As I don't live in Gl Road, try to remember not to use at School drop-off and pick-up times. Must be ghastly for residents

Occasional problems on Gloucester Road

Busy at school drop off & pick up & Saturday mornings

The problems in Gloucester Road are noticeable at school times - also at the Broad Lane end

Traffic flow is impeded during key drop off/pick up times. No such issue (or very limited) out of school term time

Re Q11: Unable to get out of driveway because of parents collecting/dropping off for Carlisle Park

re: Q2 During the school term, morning and afternoon, regularly on Gloucester Road and Carlisle Road

GLOUCESTER ROAD

Definite correlation of traffic and parking problems with School drop off, pick up, and evening/weekend functions

Re first question: Problem in term-time only - Worst occasions are when the school has 'Special Events' in evenings & weekends - Our visitors/deliveries cannot park near the house in term time because the teachers park their cars all day (and sometimes leave them ... school trips?)

Re Blockage: Weekend problem only when Denmead has a function Re Illegal/problem parking: Problem occurs with parents dropping off or picking up children and when coaches wait for pupils Re: emergency Vehicle access: I don't know but at a guess I would say that large emergency vehicles would have a problem - 10 to 15 times a week. The dropping off/picking up of children from Denmead School causes problems every day - during school holidays the road is empty of parked cars and very quiet.

Re Illegal/problem parking: Only occurs 1700 & 1800 when functions and school are taking place
Re emergency access: 'potentially, the problems must do this!' In term times this road appears to be 'unnaturally' busy for several hours in mornings and afternoons leaving local residents with the opinion that Gloucester Road must be the busiest 'residents rd' in Hampton (totally out of character with what should be the norm)

Traffic is sometimes held up by school coaches. Difficult to enter or exit our drive during school fêtes, parents meetings and other school or private functions

Problems occur in term time, during school day, also in term-time, outside the school day, and at weekends, out of term. Problems associated with School concerts, open days and fêtes always cause problems for us to park

Re Traffic flow: Problem at weekend when school holds functions Constant parking over driveways. Gridlock on a daily basis around 1615-1630. Lack of consideration to the residents of Gloucester Road from many Denmead parents

Living at the Broad Lane end of Gloucester Road we also experience difficulty with cars parking for Carlisle School. The traffic flow is easier out of term time.

My mother unfortunately died five years ago at 8.30 am. The ambulance struggled to park. Re Impediment to through traffic: Problem during school times through Gloucester Rd.

Traffic flow undoubtedly difficult at School drop-off times: Additional difficulties with van/lorry deliveries & construction traffic during weekdays

Re Q2 - Impediment happens all the time - can be any time of day, depending on type of traffic (lorries etc) School traffic is only of short duration. The main problem in this narrow road is the cars and vans parked all day which makes access to our drive difficult

Re Q2, impediment: Twice a day, around the arrival and departure of school pupils from Carlisle Park Infants School in Broad Lane

Re Q2: Gloucester Rd - Pickup/dro-off & when any events held at school. Same for blockage of road and illegal parking. Re driveway blockage - 'when I am in a hurry to get my own children to their primary school'.

There are often similar traffic problems when the school hold evening functions or evening events

Extremely busy in Gloucester Rd from 0830 with Carlisle School - then Denmead School same in the afternoon from 3pm through to 4.30-4.45 pm plus ad-hoc school coaches

Problem diminishes considerably out of term times

Large lorries & coaches frequently use Gloucester Rd. Very noisy - better out of term time.

Large SUVs create traffic jams in Gloucester Road frequently during term time and the drivers have scant regard for local residents

I have only really noticed problems with excess traffic and 'panic parking' during school term times particularly between 1530-1600 hrs

Parents do not seem very considerate as they are rushing to collect their children, they tend not to be great at parking either!

It is obviously better out of school times

It is clear that the traffic problems are only caused by school traffic (of Denmead and Carlisle Infants) as there are no such problems out of term time

re: Q2 In Gloucester Road at school arriving and leaving times, area is sometimes gridlocked with opposing lines/traffic cars parked both sides with no tucking in space left. re: Q14 People use every space to park on both sides so that there's nowhere to tuck in & left opposing flowing traffic snake through

re: Q2 Picking up and dropping off children in Gloucester Road and also Denmead School has events

Occasionally there are traffic problems at weekends when cricket or other functions are on

The school collection time is by far the worst time of day. I have never experienced any other problems when the school is closed for holiday. I have had parents blocking my drive and refusing to move when I needed to enter and leave.

Parking issues when have special events, ie Harvest Festival, evening events. Often park across drives with engine running as state only be a moment.

In school holidays, access fine. No traffic problems at all. Whole school events bring the road to a standstill.

Problems are in term time at beginning and end of school day, or sports days or school events, plus occasional problems of vans parked.

When children at school very hard to park. Much easier when on holiday.

Of course there are more cars during school drop-off and pick-up but, as with all roads in the borough, traffic flow is usually impeded by cars parking on both sides of the road all day long.

Problems occur at drop-off and pick up during term time - every time - and whenever there are special school activity days.

The problems happen most school days and more so during school activity functions

Traffic flow and parking problems happen at school pick up time and evening when school has after hours activities/social evenings. Road clear in out of term time.

Worse when dustbin men come on Thursdays, and also when there is building work in Gloucester Road or Wensleydale Road.

Traffic blockages at 7 am usually created by waste collection teams since they seem to try to block the road on purpose, even when there is space to park against the kerb. And when I have problems getting out of my driveway, I believe these are usually parents of Carlisle School children.

Better out of term. Having Carlisle School exacerbates problems at Broad Lane end of road. Acute parking problems for extra curricular activities (sports days/fetes etc).

The problems caused by congestion are not just related to Denmead School but are also caused by parents parking illegally in Broad Land and Gloucester Road whilst dropping children off and collecting them to and from Carlisle Infants.

As school times produce more traffic these are the worse condition times

No problem at all out of term time

No traffic problems out of term time. Weekend events disrupt traffic with parked cars down to no. 20. Worst traffic is when I need to take my own children to school (8.20-30). Parents park for up to 30 mins 4.30 - 5 for club pick-ups, making parking v difficult for residents. Bin day very difficult.

The school needs another access point. The staff and parents need to park further away and walk. During the summer, Easter etc school holidays Gloucester Road becomes a quiet tree-lined road.

re Q2: weekdays during school term mainly re:Q14: Don't know Being a cul-de-sac area, Carlisle Road and Scotts Drive regularly suffer from traffic log jams restricting both entrance and exit from these roads. These occurrences mainly happen during school drop-off and collection times & refuse collections.

With 2 schools in the area there is obviously a very busy period around drop-off time in the am.

It is clearly linked to school drop-off and pick up times, but also sports and other after school events.

The problem does not occur outside of school pick up and drop off despite the amount of building work occurring in Gloucester Road

Only marginal improvement during school holidays. Best to discourage use of Gloucester Road as a thoroughfare by restricting access from Wensleydale Road? Parking problems are with commuters

Road blockage occurs when building work is taking place in residents' houses and deliveries of materials etc block the road for a short time, or when road works happen, or when a function occurs at the school, e.g. Christmas Fair

traffic problems are daily at school times, and whenever Denmead have special events

All the problems will worsen with more numbers and size of vehicles

Gloucester Road is very difficult to pass up and down at times during term time. We live at XX (southern end of road) and the parking of parents dropping off and collecting goes beyond our house and meets up with the parking of people taking trains towards Wensleydale Road

Significant difference during term time. Can the school request parents not do 3 point turns on Gloucester Road as this causes huge delays

Contrary to the Denmead School survey traffic parked down the road does correlate with school drop off times. It is worse around the school vicinity but does come down as far as our property (xx - southern end) and we frequently can't park near our house. When busy, passing down G R is very bad and people get angry and speed over the humps once they are moving. I am amazed there hasn't been a serious accident.

The roads are quiet and flow of traffic is very good out of term. parking around the bend at the end of Gloucester Road and park lane can be very dangerous during term time. Very poor visibility. Irresponsible parking from parents.

Traffic congestion worse during bad weather and over the winter months. When the school carried out the traffic survey it was a nice spring day!

Out of term it is noticeable how uncongested Gloucester Road becomes. There is better and safer traffic flow partly due to less parking. At school drop off and pick up times I have experienced the chaos first hand over the past 9 years

During term time at drop off and pick up when the school has special functions (eg sports day, concerts, parents evening etc)

We don't have regular travel patterns, so problems are not frequent. However, whenever we do have to pass Denmead at drop off and pick up times there are usually problems. School events cause crowded parking for lengthy periods and are a nuisance.

There can also be considerable problems in the evenings when the school hosts a parents evening or evening for new parents etc. Also occasionally at weekends there are significant parking problems.

SCOTTS DRIVE

Our cul-de-sac is too narrow for passing cars on either side of the road. Road used frequently by residents without capacity for additional traffic. People park for Carlisle Park which can be a hazard to residents

Scotts Drive is very narrow cul-de-sac. Road not designed for passing cars. Road is often at full capacity from parked cars on either side of road with little room for additional through traffic using road for turning. Users of Carlisle Park often park on the road at weekends causing further congestion and problem parking

Saturday mornings often see people parking over our drive to attend football

Gloucester Road is very congested in term time. School hire buses make this even worse. Problem is significantly reduced out of term time.

Traffic is very heavy during term time. I avoid Gloucester Road at all costs at term time as otherwise hold ups would delay me too much. It is frustrating and dangerous.

These problems occur at school pick up and drop off times (i.e. during term times) and also fete, fireworks, speech day, sports days when Carlisle Rd and Scotts Drive are badly affected, so increased school numbers would certainly impact those roads.

These problems occur during term time at school drop off and pick up times, and when the school holds special events like fireworks, speechday, fete, and sports day when Carlisle Rd and Scotts Drive are badly affected. Increased numbers will certainly impact these roads

WENSLEYDALE GARDENS

Problems are associated with parents dropping off children who attend the infants school in Wensleydale Road. Problems not evident out of term time.

Not a problem out of term time

Traffic flow and parking problems entered above are seen in term time. Wensleydale Gardens is often used as a drop-off point and parking space for users of Carlisle Park. This can cause congestion.

During term & at drop-off times there is a lot of congestion at the junction of Wensleydale gardens and Wensleydale road

Chaotic parking at 'Drop-Off' & 'Collection' times. Children getting out of cars onto the carriageway and not the footpath.

Not a driver so not in good position to answer questions

GL & WR exacerbated by Rail Commuter Parking

The concentration of vehicles parking to pick up or drop off denmead pupils at the junction of Wensleydale Gardens and Wensleydale Road causes problems on a daily basis during term time

Main issue affecting us now is parents parking on kerbs and corners of Wensleydale road and Wensleydale gardens restricting access and vision to residents driving in and out of Wensleydale gardens. This only occurs in term time.

Already an existing problem in Wensleydale gardens with cars left by people visiting Carlisle Park & commuters

No problems when school closed for holidays Problems at times of school start & finish

Caused by parked cars and vans

Parents park as and where they please with no regard to safety, residents or access. Requests to be more considerate tend to be greeted with abuse.

I've observed parents dropping kids off in Wensleydale Gardens so they can short cut through the park to Denmead. This happens occasionally at weekends and more frequently at weekends.

The problem is caused by parents of the Denmead infants school dropping off and collecting. In spite of plenty of space up Wensleydale Road, they park at the mouth of and in Wensleydale Gardens, blocking driveways and the mouth of the road.

Gloucester Road in almost all occasions has been difficult to pass through due to parked cars (frequency of use: daily)

Sometimes there are problems with double parking outside Carlisle Park entrance, dropping off for cricket nets and football. Denmead parking at the junction of WG and WR is a problem because it is difficult to get a clear sight of traffic in Wens Rd when trying to turn out.

Q16 NOISE & DISTURBANCE – WHAT IS THE NATURE OF THE PROBLEM(S)?

CARLISLE ROAD

Loud talking, shouting by children at drop off time

Noise from playing field (Carlisle Park on school sports classes: shouting of children and staff). OK occasionally but increase in numbers would increase the frequency

GLOUCESTER ROAD

Parents shouting in the road when parking & picking up their cars after 'special events'. Firework Night (didn't happen last year) which is always a week after everyone else's and just prolongs the misery for our cat who has to be medicated

When coaches wait outside for pupils the engine is always left running and this can be from 5-15 minutes

('Disturbance' relating to damage to my vehicle). In my opinion the problems I have observed relate to only traffic movements (parents attending school activities inc 'drop offs') I have personally had damage to my vehicles whilst they have been parked outside my house (mirrors damages/panels dented obviously due to manoeuvres (three point turns) at congested parts of the street by parents

After weekend school activities there are difficulties

Heavy traffic and problem parking, blocking driveways, parking just on the edge of a driveway, making it very difficult to get out - rudeness when challenged of parents desperate to park and run off to school activity. (Noise doesn't bother us)

Traffic congestion outside our premises overlapping driveway, sometimes rudeness from drivers when challenged - can be rather chaotic at times.

Parking problems when hall is used in evenings

Operatic society rehearsals at weekends

The loud voices of the group of people that use the school for a singing group, not when singing but when leaving the school at 10 pm. The noise of children in the day but no more than the everyday noise of the school.

Outdoor sports activities both on school premises and Carlisle Park create a high level of undesirable ambient noise affecting all neighbours in the vicinity.

There is also parking when there are events on in the evening or open days etc

Light pollution at night from the security light on the Jubilee Hall that shines into my garden. Noise at the weekends.

SCOTTS DRIVE

Noise disturbance evenings and weekends. School users do not consider local residents.

Out of hours noise is very obtrusive, especially weekend use of Jubilee hall & sports ground. Many children play unsupervised causing disturbance. Parents not considerate of neighbours. Burglar Alarm has gone off occasionally as users don't seem to know how to disarm it.

We back onto the school's playing field and we accept that during the school week there will be noise from kids. However, we are concerned about an increase in evening and weekend activities when we value the peace and quiet

School functions

The fete, sports days, fireworks and operatic practices are particularly noisy and speech day causes some nuisance too.

Fete, sportsday, fireworks and operatic practices are particularly noisy. Speech day causes some nuisance too.

Noise from 3 Sunday activities in July

Weekend activity

WENSLEYDALE GARDENS

Occasional noise from sporting and other events held at the school, including from a loud hailer. Annual run by pupils, consisting of several circuits of Carlisle Park, is very intrusive and unwelcome.

Annual Fete, additional parking needs (as opposed to drop-off) at sports day & other events. Noise level at football and other activities

Teachers shouting during games lessons

Over enthusiastic ""coaching"" by games staff. Occasional use of public address systems.

At the moment more an irritant than a problem - children and teachers shouting during games activities and occasional loud music at end of term parties

Had to complain to school when party taking place on Sunday in playing field of Denmead - music really loud Have accepted noise from school playing during school days

Noise outside school hours from sporting activities/music/functions despite school giving previous undertakings to obtain planning permission to do so.

Occasional open days, sports activities, but at acceptable levels.

Sports days, school fair, fireworks, the operatic society, all intrude and are a nuisance. The normal school day noise is not a problem.

Music and screaming on weekends during events (not very often)

Q22 PLEASE DESCRIBE ANY PARTICULAR PROBLEMS FROM OUT OF HOURS OPERATION

CARLISLE ROAD

School often holds sports events eg football tournaments and all participants park in Gloucester Road

GLOUCESTER ROAD

Parking, traffic flow, shouting

School events such as parent evenings and ad-hoc school trips - lots of cars - I sometimes am unable to park near my house (I have no drive).

School fetes, fireworks etc, heavy traffic and parking difficulties, problem parking.

Some parking problems and abuse

Parking and blocked road

School events - parking is our only concern rather than noise

SCOTTS DRIVE

AS above

Lights, noise, traffic disruption

The fireworks display results in fireworks landing on our cars and other property. Much worse in recent years.

Firework displays result in fireworks landing on our cars and other property. Much worse in recent years

Groups during holidays

WENSLEYDALE GARDENS

Bit of noise, nothing specific

Occasional use of sound equipment

Choir practice on a Sunday - noise - wouldn't be so bad if they didn't keep singing the same songs

[Weekend problems] partly due to activities in and visitors to Carlisle Park not necessarily associated with school activities.

Use by the operatic society is noisy, intrusive, goes on all day and into the evening, and the children make more noise than the Denmead boys. The school sports days are a considerable pain but infrequent.

Q24 WHY WOULD EXPANSION ADVERSELY AFFECT CARLISLE PARK USERS?

CARLISLE ROAD

Lately substantial increase in traffic in Carlisle Road when parents drop their children off to walk to school or the Park: use road as extended car park facility

Depends on change of access to school

Parking Problems

44% more usage

More use of park - more drop-off/collection traffic

Currently the school uses the park for sports activities more than I feel is appropriate for a private school

GLOUCESTER ROAD

More conflict in access to facilities. Visual amenity loss due to larger School footprint.

Traffic to school

More traffic to school

More traffic

It may become a noisier place to walk

At moment a lovely local residents' park. Would become much more of a public, municipal feel - with all problems more/different groups of people have

Playing field use and flow of traffic to a school

More traffic - dangerous driving by Large cars racing down Gloucester Road

Traffic congestion in Carlisle Road would back up into Gloucester Road.

I don't mind the park being used by school children

More traffic in and out and more parking

The more that the Park is used, then all the better

Both above plus greater strain on limited parking and facilities.

Less parking, more traffic, more playing field use.

Carlisle Park is not a school playing ground, but an open space for the residents of that particular area

More use as playing field should not be allowed

More parking nearby; more use of playing fields, more traffic to school.

More traffic congestion to and from the Park causing safety concerns for young children visiting the Park.

More traffic to school

More traffic more use of park by school.

More traffic will cause more congestion

Parents might make more use of the car park as congestion increases

More use as playing field

Traffic, parking

More use of playing field

I think Carlisle Park should be used as another access point for the pupils.

Both more use as playing field and more traffic. Carlisle Park is a public space that should not be monopolised for the benefit of Denmead School.

The school already has access to the park through its own dedicated entrance - if this entrance was too widely used or its use extended it could affect the park adversely.

More use of playing field and more local traffic

more use of playing fields

SCOTTS DRIVE

More use of playing field

If use park entrance, car park will be congested

More use as "spill-over" playing fields, less room for general public

They'd just use the field more so we can't

would adversely affect enjoyment of the park by making access harder. parking more congested and more noise from denmead activities in the park

More traffic and car parking

More traffic, less parking for park users

WENSLEYDALE GARDENS

Expansion would almost certainly mean more intensive use of the Park by the School, because there would be more pupils and less playing field area on the School's site. These activities in the Park would interfere with 'normal' use of the park by local residents and those from further afield.

If another 60 children are in the school it implies more games e.g. football, running. More disruption to local residents who want to use it for recreation as a 'normal' park

More use as playing field. More traffic? Park car park used for drop-offs.

If better use was made of the school's 'Park' entrance additional traffic would use either SD or WG or even Carlisle park for cars 'Drop-off'

Use of playing field More traffic to school Use of park coming to & from School

More use of playing areas

Access to School thro' park

possible overuse of grass area

Would lead to overuse of playing areas and increased traffic

Denmead would occupy more of the public open space for their sports

More use by school for school sports

Cars park in Wensleydale Gardens for use of cricket practice nets more traffic would casue congestion. Carlisle Park would struggle to accommodate cars

more open space will be used by school for sports

Traffic posing dangers to children, animals, further traffic. Public park intended for use by local residents being ""commandeered"" by people from outside the borough

More use by the School as a playing field and so reducing area available to the public for recreation

The available grassed area within the school grounds will be reduced by the proposed expansion in the footprint of school buildings. This is likely to increase reliance on on Carlisle Park for school recreation and sports activities, thus reducing its availability to residents and other users. It is also apparent that the school is already taking credit for Carlisle Park in order to meet minimum site size, as defined in school guidelines. This reliance on Carlisle Park will increase should the number of pupils at Denmead school expand further. There is likely to be other associated impacts from the expansion in

pupil numbers; increased traffic in and around the streets leading to Carlisle Park. There will also be increased noise levels affecting users of the Park.

Over-use as playing field, more traffic to school

More use of the park as a sports pitch will increase the compaction of the grass areas which is already causing bald patches.

I agree it is possible, eg more traffic

?don't know? pressure on parking/use of park

More traffic to school as the Wensleydale Gdns exit will become dangerous under such circumstances

extra traffic and safety concerns in wensleydale gardens.

Q38 LIGHT POLLUTION - PLEASE DESCRIBE THE PROBLEM AND WHEN IT OCCURS

CARLISLE ROAD

No responses

GLOUCESTER ROAD

Minimal problem at present

Lights from Jubilee Hall visible, when school have winter functions

security light at night on jubilee hall

SCOTTS DRIVE

Bright security lights shine into rear bedroom windows which means we have to hang additional covers on curtains to allow young daughter to sleep. Have complained to school.

We are aware of security lighting and have to ensure we close upstairs doors so we don't disturb our childrens sleep

Security lights too bright

High intensity security lights are positioned all around the buildings. These shine all night every night: whether in term time or not (they are not linked to motion sensors). Standard curtains/blinds are unable to shield all the light and annoying light shines into bedrooms.

I am partially sighted

WENSLEYDALE GARDENS

Security light on Sports Hall causes light pollution particularly in winter when trees are leafless

Not a big problem at present, but I would not want to see any increase in levels.

The security lights are glaring and intrusive at the moment. Because of the closeness of the house to the buildings, any security lights on closer/larger buildings would be very intrusive.

Q41 WHAT IS YOUR SINGLE BIGGEST CONCERN ABOUT THE SCHOOL'S PLANS?

CARLISLE ROAD

More traffic being added to Gloucester Road where there is already a very difficult traffic situation

Traffic

Increased traffic in Carlisle Road impacting the privacy, enjoyment & use

Increase in traffic and access to the premises

Increased traffic and parking

That the school might move, leave the site and it be used to build a housing estate

The road structure cannot cope with expansion. Situation is unacceptable as it is.

Traffic congestion

Increase in numbers which will predominantly be from beyond walking range will lead to severe congestion at peak times

Increase of traffic on a regular basis

Scale of growth is not acceptable - traffic and disturbance too much to bear

GLOUCESTER ROAD

Not maintaining current footprint and size

Out of hours and out of term-time use. It is the school holidays, evenings and weekends that make living near the school bearable and that's with the current school

That it will increase traffic/noise considerably making it a miserable place to live

Increased pupil numbers will result in increased traffic and parking problems

The increase in traffic/parking in Gloucester Road which would make it a nightmare to park for us as residents

That Gloucester Road is taking the full brunt of the expansion plans. Do not want a 2 storey building at the back of my garden.

Traffic volume - Parking

Access from Gloucester Road is inadequate for a School

That if they fail, the school closes and we are left with a load of flats, and much more disruption. A good school helps house prices

The added traffic which, combined with existing heavy school traffic, would be difficult

Pollution, Increased Traffic, already feel Gloucester Road is a busy Road. That is dangerous. As parents we are very concerned about heavier traffic.

The increase in cars, vehicles using Gloucester Road. Parking and access.

Extra traffic - dangerous driving Illegal parking

Increase in traffic

Increased congestion and road rage

Major increase in traffic during the morning and afternoon rush hours where our road is already very congested as a consequence of school traffic

The increase in cars dropping and collecting kids at the start and end of the school day

Construction traffic and if the school leaves the site then it will be developed into flats and increase traffic anyway

The amount of extra traffic Gl. Rd. is not able to cope with it

Road congestion/road safety (as Gloucester Rd *has* to be used to ""park & walk child into school"", the quantity of students must be limited to its current size. If students could only *walk* to school (rather than be driven to school) there would be minimal impact on road traffic/congestion. But as a feeder for Hampton School this will *never* be the situation)

Traffic standstill in Gloucester Road

Too much traffic

The increase in traffic - construction and parents. This will get much worse. The school had no interest in controlling this in the 18 years I have lived here. This interest only now apparent.

More cars.

Additional traffic flow and parking

Increased traffic flow in Gloucester Road.

Bringing more traffic in road

Overdevelopment of the site

Insufferable traffic, illegal and irresponsible parking, rudeness of parents picking up and dropping off, and they often refuse to move their cars.

The obvious concerns are as listed in the other pages of the circular, congestion on the road, bad parking, rudeness, refusal to move when overlapping the driveway, all of which causes moments of stress.

Extra traffic causing congestion

Any increase in numbers of pupils. Numbers should stay as now.

Overdevelopment on a site that simply cannot contain it. Ill-conceived and dangerous.

Having recently moved here we have noted the congestion in the roads around school times, the thought of that increasing by nearly 50% is quite frightening and potentially will have such significant consequences in terms of traffic, safety and enjoyment of our property.

Increase in traffic/illegal parking.

Additional traffic and chaos. Too much development (buildings) for size and location of site.

Potential increase in traffic - why can't the majority of children walk to school?

Increase in vehicular traffic and increased difficulties with parking. Increased use of Carlisle Park.

No concern

The existing road network is already too small to cope with any increase in traffic

Loss of privacy

Traffic is already a problem. We cannot take any more - likely to increase inconsiderate traffic behaviour.

Increased traffic/parking

Traffic congestion in Gloucester Road

More boys=more parents=more cars=more traffic more boys= more staff=more cars=more parking spaces taken!

Intolerable increase in traffic congestion to a situation that is already verging on the intolerable and dangerous.

That the school's plan to increase pupil numbers means the pupils are too crowded on the site

Increased parking problems and traffic congestion

Total disruption - safety on the road - access - building traffic noise and pollution

Further aggravation of existing traffic problems

Safety issues for cars and pedestrians

Intolerable traffic problems due to increased traffic

Expansion of the school on its present location is really not possible and the school should seek another location. If finance is the source of its difficulties it should raise fees.

The amount of traffic and parking in Gloucester Road. It is already a problem to increase pupils will increase traffic and parking problems

More traffic, giving parking, congestion, noise and air pollution plus safety issues

Traffic and parking

Traffic/road safety/parking

Increased traffic in Gloucester Road am/pm and weekends and inconsiderate parking

The increase in the footprint and the pupils

Second use of school at evenings and weekends making the traffic issues and parking issues seven days a week

I have no opinion on school expansion/location as I do not overlook the school site. My objection is to increasing pupil numbers which will worsen traffic problems in Gloucester Rd.

The traffic down Gloucester Rd resulting in no parking for my visitors/family

Additional traffic and inconsiderate drivers

Extra vehicles - inconsiderate parking

Even worse traffic problems in Gloucester Road with more frequent and longer lasting blockages of the road, more angry scenes and more accidents.

SCOTTS DRIVE

Too big for area available

We bought in a cul-de-sac with a small school site adjacent over 35 years ago and that is how it should stay

Extra traffic causing inconvenience/safety issues

Being so close to boundary with small garden means big impact to quality of day-to-day life. School site is too small for increased scale of build: increased disturbance, loss of privacy & impact on light & space.

New building will seriously damage our quality of life by destroying our privacy and open views onto school playing fields. In addition we will be negatively impacted by noise & light & traffic problems. Negative impact on value of house.

Traffic congestion, Noise

More traffic, noise and disruption to our neighbourhood. Most of the children coming to the school come from outside the area so give no benefit to the community.

Increased vehicular traffic impacting my road and other roads in the area, exacerbated by opening up my road as an access route.

Increased traffic impacting my road and other roads in the area, exacerbated by opening up my road as an access route.

Use of Carlisle/Scotts Drive for access in the future

Potential opening of Scotts Drive cul-de-sac - which would destroy peaceful nature of road

WENSLEYDALE GARDENS

Possibility that Wensleydale Gardens might be opened up to further access by traffic of any kind, either now or in the future.

They are 'holding a gun to our heads' in proposing such expansion, and giving us little time to object - [proposals] given us as a fait accompli

It will change the nature of the road in which we live, which is a quiet cul-de-sac

The increase in traffic; and the threat to the present nature of Wensleydale Gardens as a quiet cul-de-sac.

""Temporary"" use of our road for construction traffic and then Emergency"" vehicles is the slippery slope to constant traffic ""flow""

The likelihood of accidents increasing through expansion

Not to increase in any way the area currently covered

Unnecessary disruption of our normal lives having moved here for quiet peaceful relaxing atmosphere

The use of Wensleydale Gardens for any type of access Over-use of a small space

The problems which will be caused by any type of access through Wensleydale Gardens and/or Scotts Drive. Of equal concern is the loss of privacy, noise disturbance etc which will be caused by having a building on our boundary.

That if there is any form of access to the school through Wensleydale Gardens it will be used by pupils and parents which means this currently quite cul-de-sac will be besieged by cars twice a day and I have now heard plenty of anecdotes about the rudeness of parents if they are criticised for causing inconvenience or hazard.

Change of character of the close, loss of safety. Many single/elderly live on their own in W Gardens - safe as neighbours spot strangers, more people & access = less safety

Increase in traffic

Increase in traffic, problem parking by parents and staff

School's record of total disregard for local concerns, needs and belief that commercial aspirations override other considerations

Loss of the peace we enjoy by living in a cul-de-sac.

Permanent Disturbance and Loss of Amenity from pupil expansion and temporary or permanent access to school from Wensleydale Gardens.

The possibility of a permanent access being opened up, and the length of time during which there is noise/disturbance/dust from construction work

Large, noisy, school buildings complete with toilets and aircon very close to the boundary with my house, which has a shallow garden (24ft), which is an inappropriate overdevelopment of a site which is zoned as public open space and has been a playing field with classroom accomodation for over 30 years.

Access for construction and potential permanent access for pedestrians and vehicles outside my house

The opening up of an entracnce onto WGdns

Wensleydale Gdns losing its status as a cul-de-sac, and so doing losing the peace and quietness of the road, something that has kept me here fro over forty years.

Safety of park users if Wensleydale gardens is use as a entrance road for construction. Extra traffic in an already congested area.

Q42 ARE THERE ANY OTHER ISSUES NOT COVERED IN THIS SURVEY THAT YOU WISH TO HIGHLIGHT?

CARLISLE ROAD

School needs to address current traffic problems before any other proposal

The reasons for not relocating the school do not bear close scrutiny. The threat to sell for housing is bluff. It would not receive council approval.

Any use of Scotts Drive will extend to a major drop-off situation with congestion & safety issues for Scotts Drive and Carlisle Road.

GLOUCESTER ROAD

Against MUGA for site (no out of hours, weekend use of site) e.g. Floodlights

The school does not manage the current traffic/parking issues

I presume all teachers/pupils/parents reside elsewhere

Increased height and size of buildings

I feel that an additional access site is needed be it Scotts Drive or W Gardens

We are already blighted with cars parking all day whilst owners going on trains. Affect of Waitrose gets the go ahead - which is inevitable. Parents parking for Carlisle School. People from Uxbridge Road parking in Gloucester Road.

Yes, the advantages of a School: the long unused periods as against residential

Is anyone considering what is best for the neighbourhood, not just the individual? PS We live at the end of the road and we are not very affected by the traffic & current situation at present

With the traffic as it is at present there is going to be a fatal accident at some time in the future

1. The student catchment area means that driving students to school will always be the norm 2. Almost all students are ""dropped off at school after a car ride"". Almost every extra student will require yet another car parked each morning & each evening i.e. another car parked in Gloucester Road. We are almost at student-saturation level because there is no more room for more cars!!

The school shows no interest in the local community other than self interest.

Mobility vehicle comes to collect husband and vehicle never able to get close enough to house/drive

No

Parents are often abusive when challenged about their parking - this will only get worse.

Site and buildings should not be used for out of ours activities by parents association.

Concern about emergency vehicle access

Current congestion is also caused by Carlisle School traffic

Damage to surface of Park caused by sports activity.

The potential for further congestion at the junction of Broad Lane and Gloucester Road.

Promises only apply in the short term and would be over-ruled or reneged upon in the future.

Have the school explained the rationale behind the increased class size they are proposing. Too many pupils per class.

This questionnaire is biased and potentially unhelpful

Control traffic from Wensleydale into Gloucester Road, similar to controls at Junction Hill Road and Cole Park Road, Twickenham.

We are concerned that the problem with access to our home and moving up and down Gloucester Road could run into evenings and weekends

air and noise pollution (environmental)

Three point turns/effective drop off system without the need for parking

Parking encroaching up G Rd from station end Mon-Fri

Construction traffic should not be during school and rush hour and should not block the traffic

Second use of school and safeguards that any decisions made on expansion will be permanent

destruction of road surfaces and kerbs from construction vehicles

The effect on the "community" of Gloucester Road, how it impacts my neighbours closer to the school.

Use of school bus. Green travel survey to restrict number of cars

SCOTTS DRIVE

Cul-de-sacs are dead-ends not designed for through-traffic.

More state schools are needed not independent

WENSLEYDALE GARDENS

The School is welcomed in the area as it stands. But further expansion, in a site surrounded by residential property with limited access would impose numerous penalties on surrounding residents, out of all proportion to any benefits to the School or the wider community.

A) It is not unusual for a business to have to relocate to grow B) We have all (WG) purchased our houses in a cul-de-sac

Behavioural problems through greater numbers of children

Carlisle Park trees overhanging WG will be mauled by contractors lorries

A cul de sac is a no through road - residents choose to live here for that reason. They should not be altered to school's expansion or profit!

The proposed use of a cul de sac as construction then emergency access - once there is a gate there, there will be creep and use will grow. The road is not suitable and it is wrong expecting the residents to police this and is destruction of people's surroundings and co